

Railway lighting





SNCF workshops, France



Ultimate seal and durability

- IP69K resistance to high-pressure jets during cleaning operations
- No internal dust build-up
- IP68 sealing to protect the light engine from external stress factors



Resistance to IK10 shocks and to chemical corrosion

- Housing and metal components resistant to chemical corrosion and abrasion
- Mechanical concept resistant to high-intensity vibrations and impacts

Why choose Sammode?

Shocks, dust build-up, corrosive environments: lighting for railways has to endure particularly difficult conditions. Lighting installations, which guarantee the safety of personnel but are often difficult to access, must consist of high-performance and extremely reliable equipment.

As specialists in lighting for harsh environments, the Sammode and SILL brands offer a wide range of high-performance and robust solutions for lighting maintenance workshops and railway applications in general. Find all our ranges under one roof, and benefit from a single supplier to meet all your needs.

The Sammode guarantee

Sammode is committed to the quality and durability of its lighting solutions. Thanks to our experience in extreme environments, we can offer you long-lasting solutions with an up to 8-year guarantee in 24/7 intensive operation.



Durable and repairable solutions

- Repairability and interchangeability of components
- Highly dependable electronics ... resistant to electrical fluctuations



Optimised total cost of ownership

- Minimal energy consumption
- Reduced installation and maintenance costs
- Exceptional service life of our luminaires

Perfectly adapted luminaires

HOUSING TO WITHSTAND ANYTHING



Co-extruded polycarbonate/acrylic body which is ultra-resistant to shocks linked to the handling of heavy tools in tight spaces, a particularly testing environment for luminaires.



Housing impervious to spatter from oil and cleaning agents, thanks to the use of co-extruded acrylic sheets, an anti-UV barrier, and stainless steel for the end caps and fixing straps.



Thanks to axial clamping by means of a central screw and a unique three-stage seal, perfect watertightness of the luminaire is guaranteed over time, irrespective of how many times it is opened or closed.



Close'n'Connect system developed and patented by Sammode:

- Automatic connection on closing
- Quick and easy installation and servicing
- Reversible gear tray for left-hand, right-hand, or through connection.



Opposite-side opening without having to interfere with the cable entry, a critical sealing point. Handle for easy guidance of the gear tray during servicing, and its automatic positioning when locking the luminaire.

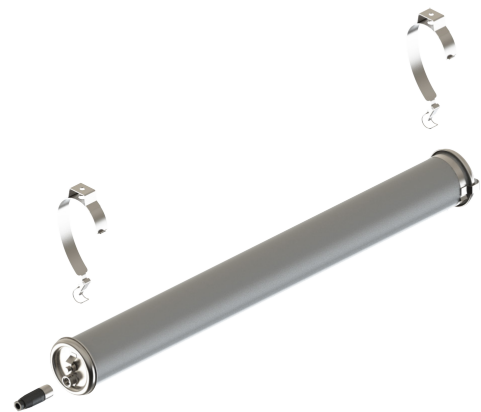


Fixing strap equipped with a pad with a large bearing surface to hold the luminaire solidly in place while buffering against shocks. The toggle clamp attachment system enables rapid, tool-free assembly/disassembly.

“NIEPCE 70 FV for inspection pit”

High performance and ease of installation

- Optics suited to every working zone. The NIEPCE FV for inspection pits, for example, has dual-oriented optics for uniform lighting on the underside of a carriage and at the bottom of a pit.
- A broad range of ingenious solutions to facilitate implementation: quick connections, through-wiring, reversible or sliding gear plate, etc.
- Smart Lighting options with built-in presence detectors, switch-off warning, or DALI protocol, depending on your requirements.



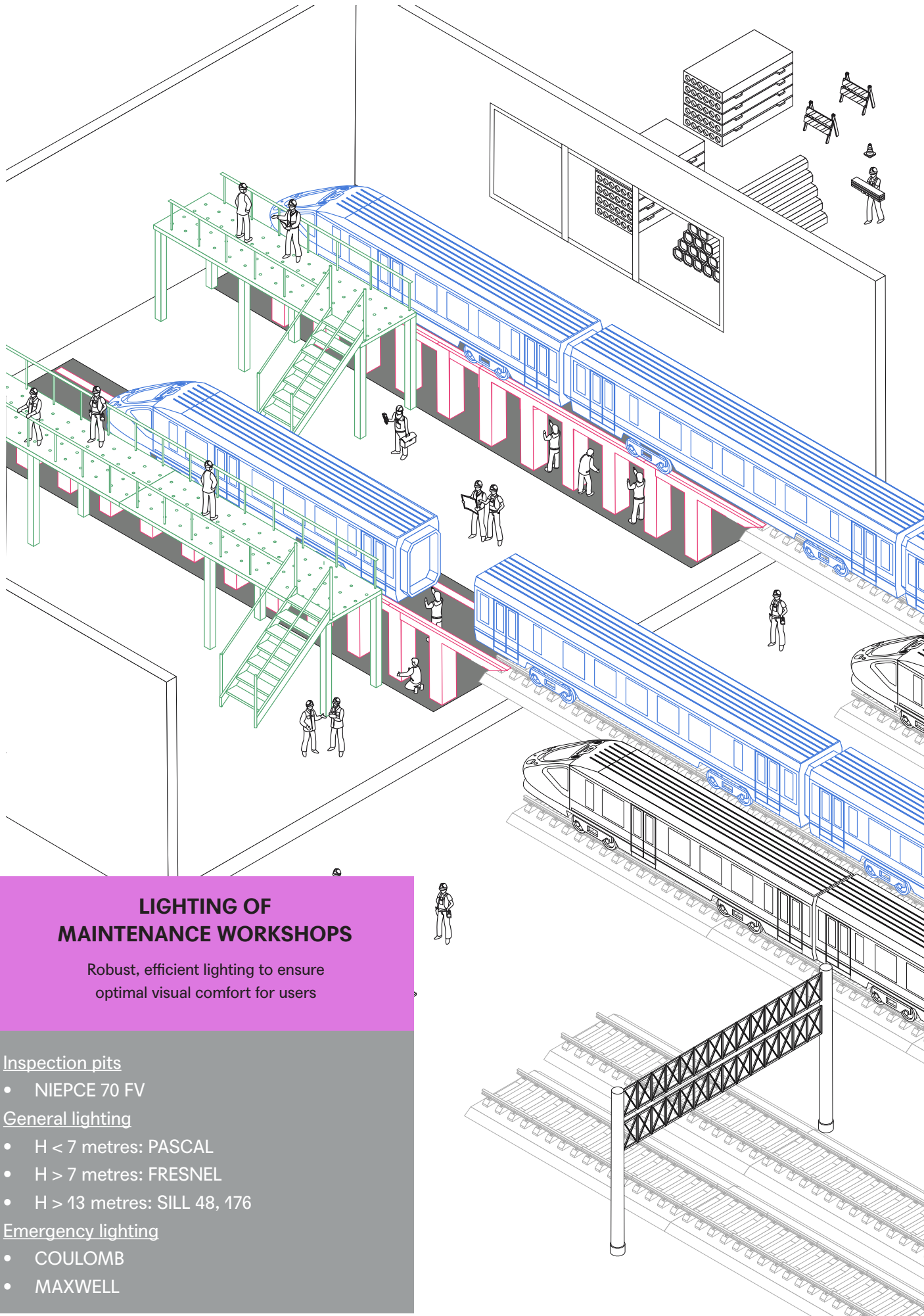


SNCF workshops, France

100% repairable and upgradable

- As designer and manufacturer, Sammode ensures the continuity of existing solutions, with long-lasting and upgradable luminaires.
- Light sources, electronic circuits and mechanical structure: each component is designed to be durable and replaceable.
- Easy maintenance operations thanks to our quick-opening fixing straps, unpluggable connectors and our patented SLIDE and CLOSE'N'CONNECT systems, with no risk of loss of parts and without affecting the seal properties.





LIGHTING OF MAINTENANCE WORKSHOPS

Robust, efficient lighting to ensure optimal visual comfort for users

Inspection pits

- NIEPCE 70 FV

General lighting

- $H < 7$ metres: PASCAL
- $H > 7$ metres: FRESNEL
- $H > 13$ metres: SILL 48, 176

Emergency lighting

- COULOMB
- MAXWELL



WORKS TRAINS

Compact solutions that are resistant to vibrations and bad weather

Confined spaces

- FOUCAULT

Heavy vibrations

- CUGNOT

TUNNELS

Robust and flexible lights to ensure optimum safety

- CUGNOT
- CROOKES, NAPIER (borosilicate glass)

BUILDING SURROUNDS

Efficient light fixtures that resist bad weather and electrical fluctuations

Wall lights

- PASCAL

Asymmetric projectors

- SILL 48, 153

Selection guide

Maintenance workshops Gangways	<ul style="list-style-type: none"> • Electrical fluctuations • Different heights 	<ul style="list-style-type: none"> • PASCAL • FRESNEL • SILL 48, 176
Emergency lighting	<ul style="list-style-type: none"> • Dust build-up • Exit path lighting 	<ul style="list-style-type: none"> • COULOMB • MAXWELL
Inspection pits	<ul style="list-style-type: none"> • Chemical corrosion (oils) • Mechanical shocks 	<ul style="list-style-type: none"> • NIEPCE FV
Tunnels	<ul style="list-style-type: none"> • Piston effect • Fire reaction • Dust build-up 	<ul style="list-style-type: none"> • CUGNOT • CROOKES • NAPIER
Works trains	<ul style="list-style-type: none"> • UV rays and bad weather • Power surges • Vibrations • Mechanical shocks 	<ul style="list-style-type: none"> • FOUCAULT • CUGNOT
Building surrounds	<ul style="list-style-type: none"> • UV rays and bad weather • Corrosion 	<ul style="list-style-type: none"> • PASCAL • SILL 48, 153

Maintenance workshops



SNCF technicentre, France.



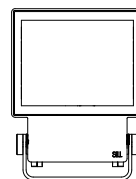
PASCAL



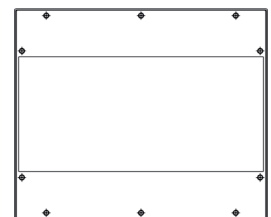
COULOMB,
MAXWELL



FRESNEL



SILL 48M

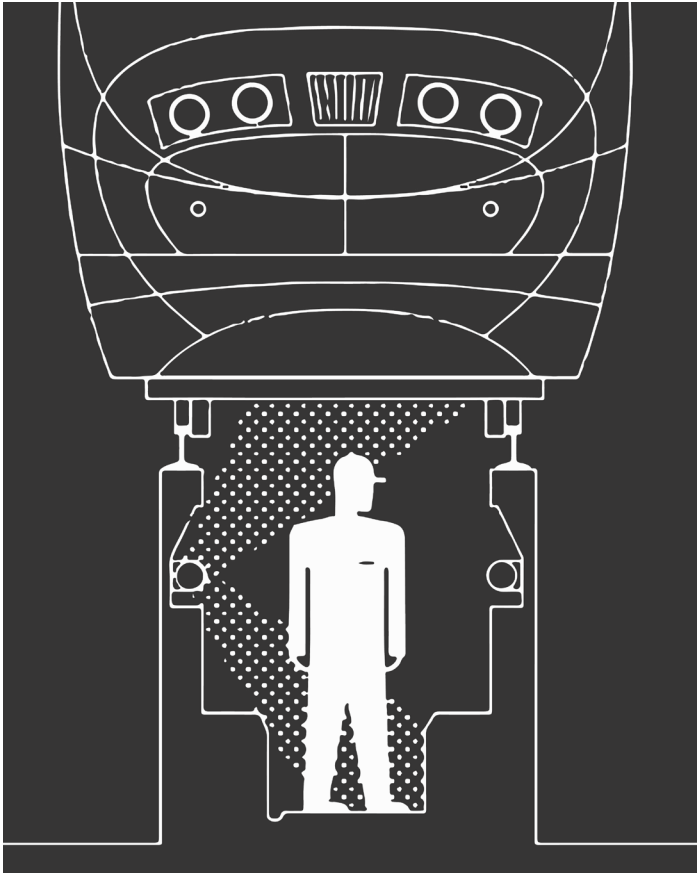


SILL 176

To carry out dismantling, repair or assembly operations, you need qualifications, concentration, but above all, powerful, robust lighting! For more than 70 years, Sammode has excelled in this field, with tube lights resistant to impacts, vibrations, voltage surge and dust build-up. These are now available in combination with SILL brand projectors to bring you a vast range, from 1000 lm to 30,000 lm, to light up every part of the workshop:

- Height < 7 m with diffuse lighting: PASCAL
- Height > 7 m with intensive directive lighting: FRESNEL
- Height > 13 m: SILL 48, 176
- Safety lighting from a central source or in independent units: COULOMB, MAXWELL

Inspection pits



Inspection pits, Belgium.



NIEPCE 70 FV

For rolling stock inspection pits, the solution is evident: Sammode has designed a tubular light fitting specifically for this application, the NIEPCE 70 FV. Packed with technology, it is powerful enough to provide the light required on the underside of a carriage, without dazzling the operator. This ingenious luminaire comes fitted with an extractable, reversible gear plate system so it can be effortlessly adapted on site with wiring on either the left or right. When you add to that Sammode's renowned sealing expertise and robustness, what you get is a luminaire that boasts an array of advantages:

- Extremely compact luminaire for tight spaces
- Resistance to oil damage, falling tools and other mechanical shocks
- Dual-oriented optics for uniform lighting on the underside of a carriage and at the bottom of a pit
- Energy savings with up to 50% reduction in electricity consumption

Tunnels



Perthus LGV tunnel between France and Spain.



CUGNOT



NAPIER, CROOKES



COULOMB,
MAXWELL

Whether in main tunnels or in side tunnels, lighting reliability and durability are non-negotiable. The personal safety of drivers and maintenance staff is at stake. With its long experience in the most challenging industrial environments, Sammode supplies the most reliable LED technology in the most tightly sealed and most robust tubular housing on the market:

- Tubular shape limits dust build-up
- Luminaires resistant to atmospheric pressure and decompression (piston effect) when trains pass
- Luminaires with a fire reaction compatible with the tunnel environment
- One-piece housing design impervious to vibrations

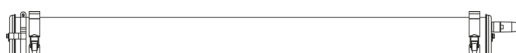
Works trains



Line maintenance train, TSO, France



FOUCAULT



CUGNOT

Sammode tube lights are versatile by design and adapt to every situation, including in the tightest of spaces. Their supreme ease of installation and the wide choice of sizes and wattages available from Sammode never fail to impress, likewise the intrinsic qualities of our tubular housings:

- Resistance to vibrations and power surges
- Resistance to ballast projections and other mechanical shocks
- Resistance to UVs and bad weather
- Numerous class 1, class 2 or class 3 electrical connection options

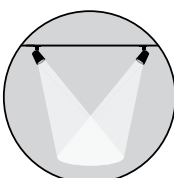
Sammode and SILL: experts at your side

Whether for a new installation or a renovation, designing an optimum and lasting lighting installation is a job for specialists. Like any long-term investment, it takes good support to make the right choice. Sammode and SILL, the experts in lighting for industrial environments, will be at your side right throughout your project to advise you on the best solution to put in place.



Diagnosis and recommendation

After on-site analysis of the conditions of use, the installation constraints and any other specific requirements, together we help you choose the most suitable models from the wide range of Sammode and Sill solutions.



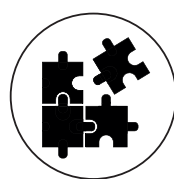
Lighting studies

Our design office will carry out lighting studies to optimise your installation with regard to lighting levels, lighting comfort, the zone to be lit and the layout.



Control systems

To reduce your energy bill and enable better control of your installation, our experts will suggest the management solutions best suited to your situation.



Development of special products

As both designer and manufacturer, we systematically study the best technical solutions, and are able to adapt them to meet your needs.



On-site testing and support

We offer our customers comprehensive project follow-up, and regularly conduct on-site testing of our solutions, in order to validate the specifications.



Ultimate 8-year warranty

For most of our products, we propose an ultimate 8-year guarantee, a unique pledge on the lighting market, for intensive operation, 24/7.



Sammode

SILL



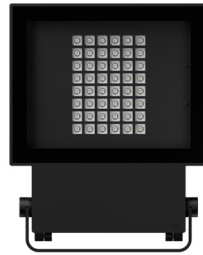
Up to 30,000 lm



FRESNEL



SILL 48M



SILL 48L



SILL 176

Up to 10,000 lm



CUGNOT, PASCAL



SILL 153



CROOKES, NAPIER



COULOMB, MAXWELL



NIEPCE 70 FV



FOUCAULT

Accessories and options



PS3 plug



316L stainless steel



Prewired with Wieland lead



Built-in detector

References

Arep
CFL
Deutsche Bahn
Eurotunnel
GTT Turin Metro
Israel Railways
Nantes tramway
Naples Metro
NSB
Perthus Tunnuel
Queensland Rail
RATP
Renfe
Scotrail
SNCB
SNCF Maintenance Centre at Saint-Pierre des Corps
Statens Järnvägar
STIB/MIVB
T-BANE
TCL
Tramway Montpellier
TSO
Tunnels TGV Sud Est
Turin Metro

France
Luxembourg
Germany
UK
Italy
Israel
France
Italy
Oslo, Norway
France - Spain
Queensland, Australia
Paris, France
Spain
Scotland
Belgium
France
Sweden
Brussels, Belgium
Oslo, Norway
Belgium
France
France
France
Italy

Sammode and Sill are the European specialists in technical lighting.

Industrial and family-owned, our companies share decades of expertise, innovation and excellence. Our industrial expertise means we can guarantee the suitability, performance, reliability and long-term robustness of all our products, with particular attention paid to design.

As designer, manufacturer and consultant all in one, we favour a customer-centric approach, ranging all the way to made-to-measure solutions.

When clients choose one of our lighting solutions, they get far more than a light fixture: they acquire intelligence and service.

Contact

Sammode, SILL

Head office France
24, rue des Amandiers
75020 Paris
T +33 (0) 1 43 14 84 90

FR: info@sammode.com
EN: enquiry@sammode.com

Head office Germany
Gewerbering 28-32
58579 Schalksmühle
T +49 (0) 23 55 50 41 0

sammode.com
sill-lighting.com



[@sammode.lighting](https://www.facebook.com/sammode.lighting)
[@sill.lighting](https://www.facebook.com/sill.lighting)

Errors and omissions excepted.
©Sammode, Sill 01/2022.