

## Port installations





Lübeck Port, Germany.

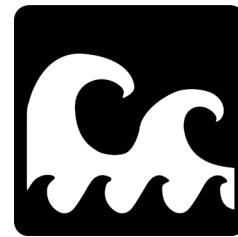
## THE BENEFITS

The lighting in port areas must be able to respond to numerous external constraints: Humidity, particularly aggressive saline environment, vibrations, installation at great heights on gantries or masts - all while providing reliable and high-quality performance in order to ensure the safety of users. In response to these numerous requirements, Sill and Sammode, who are specialists in high power lighting and lighting in difficult conditions respectively, offer robust, sustainable solutions and guarantee lighting levels and necessary uniformity.



### Performance and efficiency

- Uniformity and lighting level over a very long range
- Optimisation of the amount of luminaires thanks to their lighting performance
- User safety as they are glare-free
- Reduction of light pollution



### Resistance to marine atmospheres

- Materials that are not sensitive to corrosion : aluminium ALSi12 with low copper content and 316 L stainless steel
- Completely water resistant IP65/IP68/69K



## SHS Lighting Guarantee



Sammode and Sill are committing to delivering high-quality, long-lasting luminaires. All of our products enjoy a minimum 5-year guarantee, which can be extended to 8 years for models exposed to extreme environments.



### Sustainable Solutions

- Reparability and interchangeability of components
- Electronic industrial components
- Mechanical design resistant to vibrations
- Long-life driver



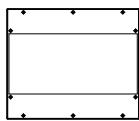
### Optimisation of the Total Cost of Ownership

- Evolving modular design
- Sustainable and maintainable solutions
- Reduced installation and maintenance costs
- Luminaires with an exceptional service life

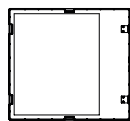
# CONTAINER TERMINALS



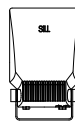
Container terminals, Zeebrugge, Belgium.



SILL 176



SILL 177



SILL 153



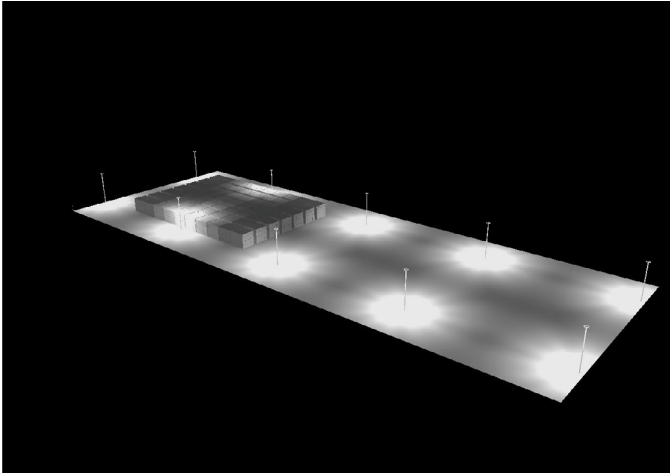
SILL 155

Areas of heavy traffic and handling, container zones require very specific lighting: safety must be guaranteed by a minimum illumination level for good visibility and optimal uniformity for visual comfort. Our luminaires equipped with LED technology limit the risks of glares by ensuring a homogeneous distribution of light.

Thanks to their long-range asymmetrical optics, Sill projectors limit the number of light points on new installations and reduce power in renovation — all while guaranteeing an unequalled level of uniformity. These optics reduce light pollution by ensuring a  $ULR = 0$  (upward light ratio).

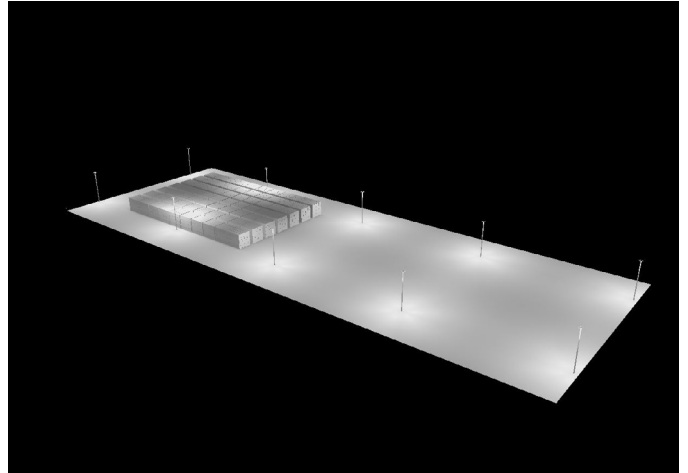
# CASE STUDY

Before



Traditional source lighting 430 W

After



SILL 177 lighting 350 W

Amount of light points: 60

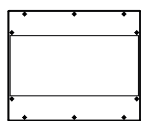
Amount of luminaires per mast: 6

Distance between each mast: 100 metres

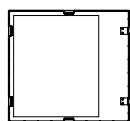
Installation height: 25 metres

	Traditional source	Sill 177	
Source	Metallic iodide	LED	
Power consumption (W)	430 W	350 W	18% lower energy consumption
Uniformity	0,150	0,5	

# LOADING/UNLOADING DOCK



SILL 176



SILL 177



SILL 153



SILL 155



SILL 154



Cugnot

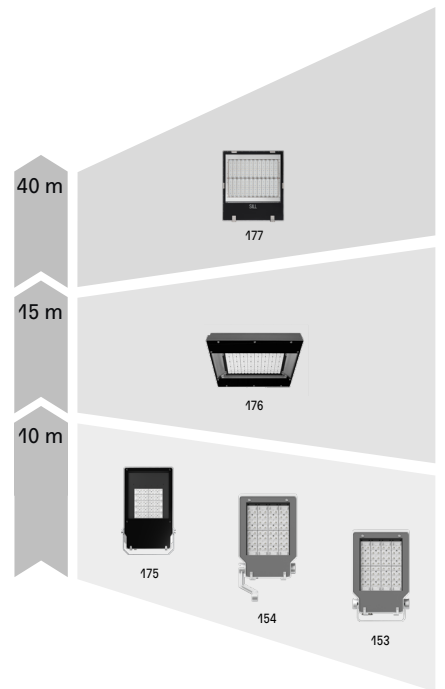
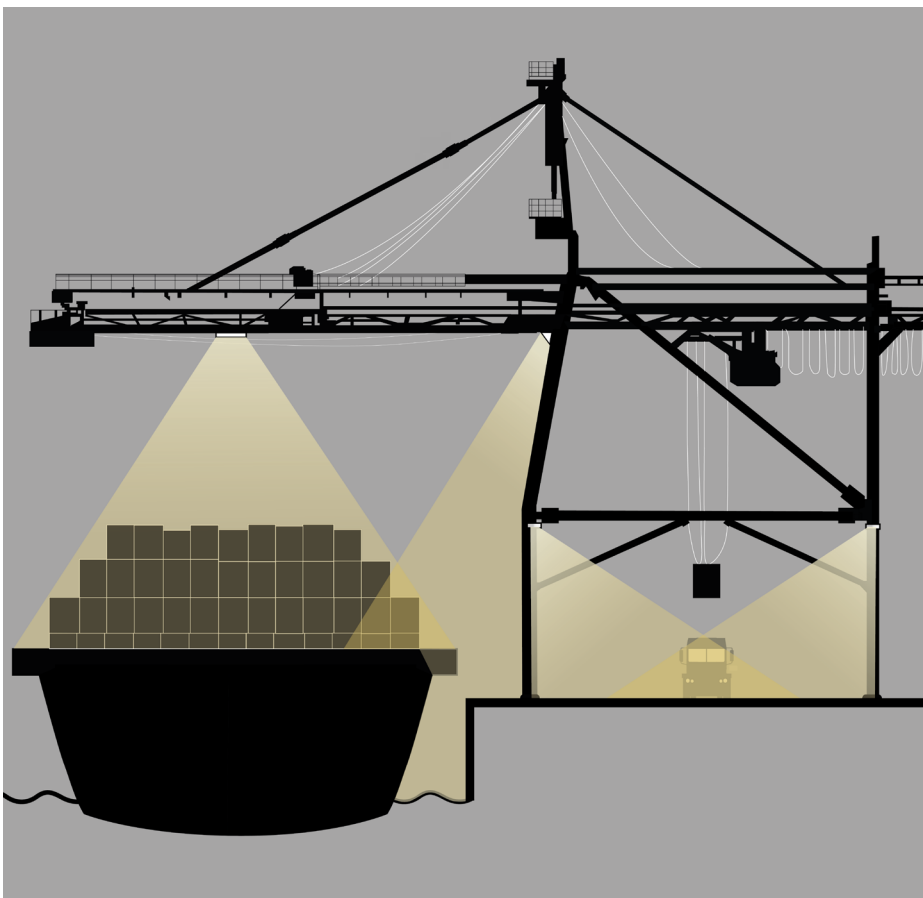


Maxwell

Installed on the gantries and unloading cranes, luminaires face extreme conditions: saline environments, vibrations, humidity and shipping seas. The materials from Sill and Sammode products are selected to resist saline: 316L stainless steel and low copper content (aluminium AISi12) which are naturally not sensitive to corrosion phenomena.

The projectors and their tailored optics - intensive, extensive and asymmetrical - can reach a good illumination level depending on the height of the installation or the zone requiring illumination, from the dock to the bilge.

# QUAYSIDE CONTAINER CRANE



## LOADING DOCK

A vast array of highly efficient lighting solutions, for reliable and effective illumination from the docks to the bilge

### Gantries and loading cranes

- SILL 153, 155 (height < 12 m)
- SILL 176, 177 (height 12 to 30 m)
- Cugnot (stairs and gangway)

### Approaches for docks, traffic and train terminals

- SILL 154, on a mast

### Low-angled illumination on dock bank

- Fresnel

## CONTAINER TERMINAL

High-performance, efficient, made-to-last solutions dedicated to lighting of intensive activities in large spaces requiring a high level of security

### Projectors on masts in container zones

- SILL 176, 177

### Mounted on gantries

- SILL 153, 155, 176
- Cugnot

### Emergency lighting

- Maxwell



## ANNEX BUILDINGS

Efficient, long-lasting solutions for general lighting and at great heights indoors

### Administrative buildings

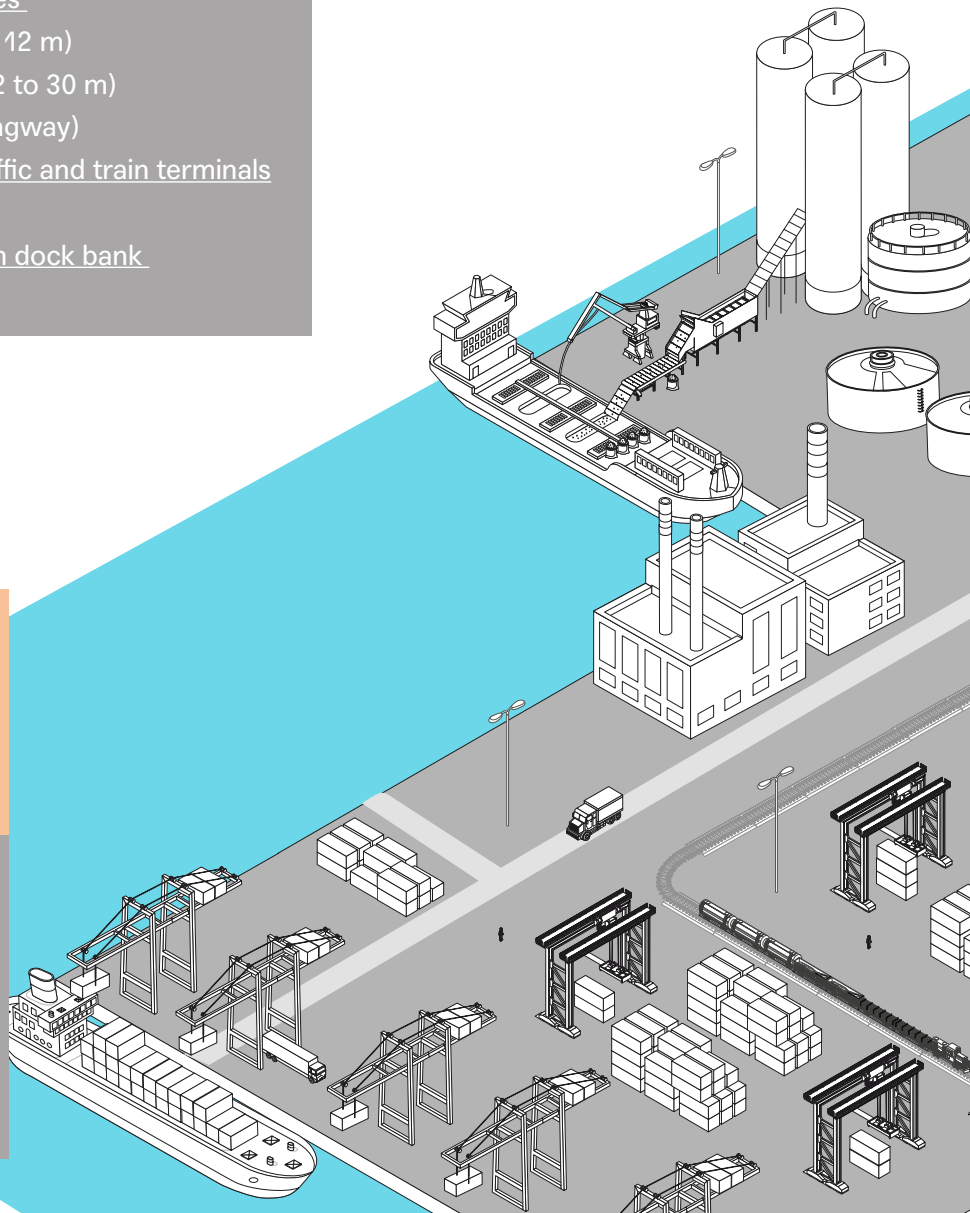
- Pascal

### Transit warehouses

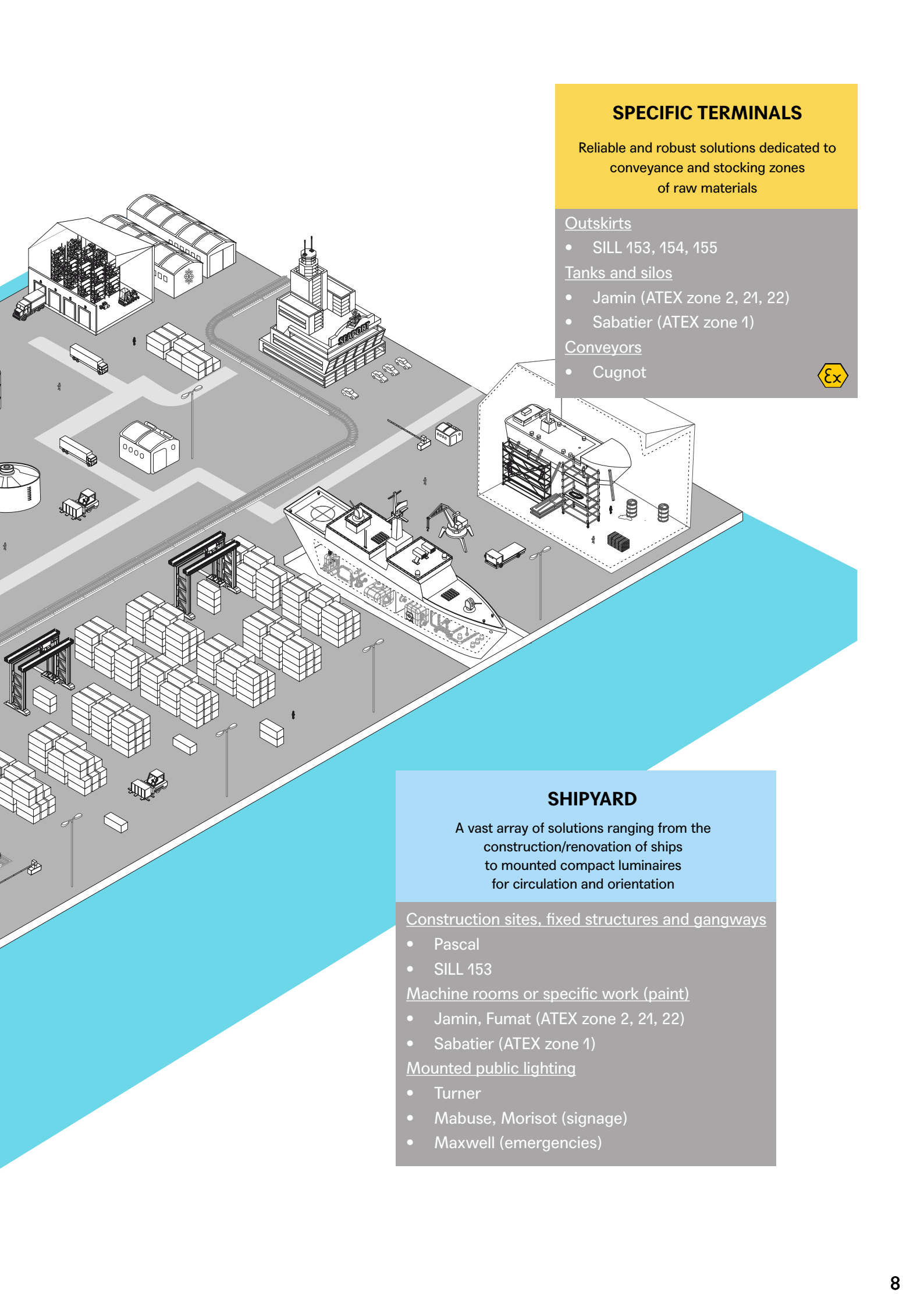
- Fresnel (height < 8 m)
- SILL 176 (height 8 to 15 m)

### Refrigerated warehouses (up to -40°C)

- Bering, Barents
- Maxwell BT







## SPECIFIC TERMINALS

Reliable and robust solutions dedicated to conveyance and stocking zones of raw materials

### Outskirts

- SILL 153, 154, 155

### Tanks and silos

- Jamin (ATEX zone 2, 21, 22)
- Sabatier (ATEX zone 1)

### Conveyors

- Cugnot



## SHIPYARD

A vast array of solutions ranging from the construction/renovation of ships to mounted compact luminaires for circulation and orientation

### Construction sites, fixed structures and gangways

- Pascal
- SILL 153

### Machine rooms or specific work (paint)

- Jamin, Fumat (ATEX zone 2, 21, 22)
- Sabatier (ATEX zone 1)

### Mounted public lighting


- Turner
- Mabuse, Morisot (signage)
- Maxwell (emergencies)

# SPECIFIC TERMINALS




Port of Nantes



Jamin 



Sabatier 



Cugnot

Bulk materials, whether they are dry or liquid, require specific modes of handling. Petrochemicals, aggregates, grain and other goods need to be loaded and unloaded using conveyor systems.

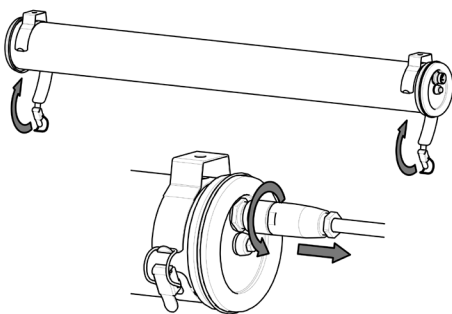
Lighting in these areas requires specific solutions, particularly in ATEX explosive zones (hydrocarbons, cereals). The luminaires must also be able to withstand strong vibrations and erosion in the conveyor zones.

The range of Sammode tubular luminaires covers standard lighting as well as ATEX zone 1, 2, 21, and 22.

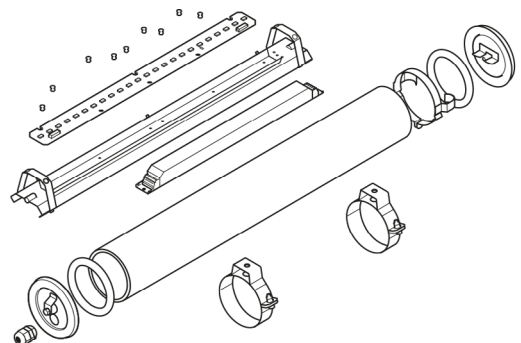
In compliance with the severe requirements of EN 60598-1 (tests in accordance with IEC 60068-2-6) and IK10, our tubular luminaires are designed to withstand heavy vibrations and shocks, thus ensuring the sustainability of the installation.

Thanks to their ergonomic and light design they are distinguished by their great ease of installation.

An added benefit is that they are entirely maintainable. All parts of the luminaire can be replaced on site.



Plug and play installation concept



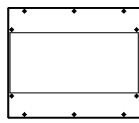
Modular concept

# SHIPYARDS

Port of Nantes Saint-Nazaire



SILL 153



SILL 176



Sabatier 



Maxwell

The illumination of shipyards is characterised by the large dimensions, especially in height, of the structures on which the luminaires rest. These must be light, very flexible in their installation but also powerful enough to illuminate these great heights.

Shipyards lighting has to meet very different needs going from great height lighting to extra lighting or even of ATEX zones for painting areas. Aesthetic and functional, Sammode tubular luminaires are also suitable for illuminating the ships themselves for safety lighting, mark-up lighting or external deck lighting.



## Sustainable and high-performance lighting



■ ■ Maxwell




■ ■ Pascal



■ Cugnot



■ ■ Sabatier 



■ Mabuse / Morisot



■ ■ ■ Jamin



■ Turner



■ ■ Fresnel

## Accessories



Inox protective roof



Shock-resistant fixing strap



Nickel-plated brass cable gland



Double cable gland

# SILL

## High-performance projectors

- Loading dock
- Container terminal
- Annexe buildings
- Shipyard
- Specific terminals



177



176



155



154

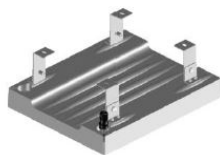


153

## Accessories



Connector for transferring



Angle brackets



Swivel bracket



Suspension kit



Photo credit : mf-guddy, primeimages



**BELGIUM**

Duisburger Hafen  
Port Zeebrugge

**FRANCE**

Grand port maritime de Rouen  
Port of St Nazaire  
Port of Bordeaux - Lumignon, Bordeaux  
Port of The Hague

**GABON**

Comilog - Owendo Port

**GERMANY**

SWRN (Sekundärwertstoff-Recycling-  
Hafen-Nürnberg)

**(GERMANY)**

Duisburger Hafen  
Speicher Hafen  
Hafen Wismar  
Hafen Stralsund  
Hafen Wiek  
Hafen Brake  
Hafen Hamburg  
Seehafen Rostock

**NETHERLANDS**

CRO Ports Vlissingen

**UNITED KINGDOM**

Port Killingholme

Sammode, Hoffmeister and Sill make up SHS Lighting, the European specialist in technical lighting.

Industrial and family-owned, our three companies share decades of expertise, innovation and excellence. Our industrial expertise allows us to ensure the precision, performance, reliability and long-term robustness of all our products, with a particular attention to design.

We are at the same time designers, manufacturers and technical advisors. We favour an experience centred on customers, including tailor-made solutions.

When clients choose one of our products, they get more than a light fixture: they acquire intelligence and service.

#### Contact

SHS Lighting  
Sammode, Hoffmeister, SILL  
24, rue des Amandiers  
75020 Paris - France

T +33(0) 1 43 14 84 90  
FR: info@sammode.com  
EN: enquiry@sammode.com

sammode.com  
studio.sammode.com  
hoffmeister.de  
sill-lighting.com



#sammode.lighting  
#hoffmeister.lighting  
#sill.lighting

Subject to changes.  
©SHS Lighting 11/2019.



Sammode

**HOFFMEISTER**

SILL

PORTS-LG-SHS-EN-102019