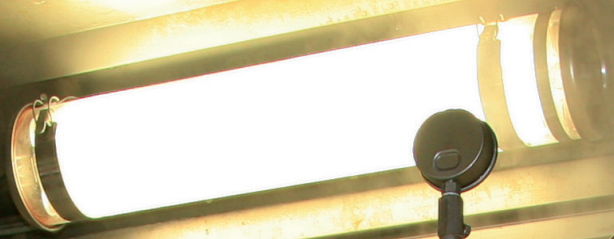


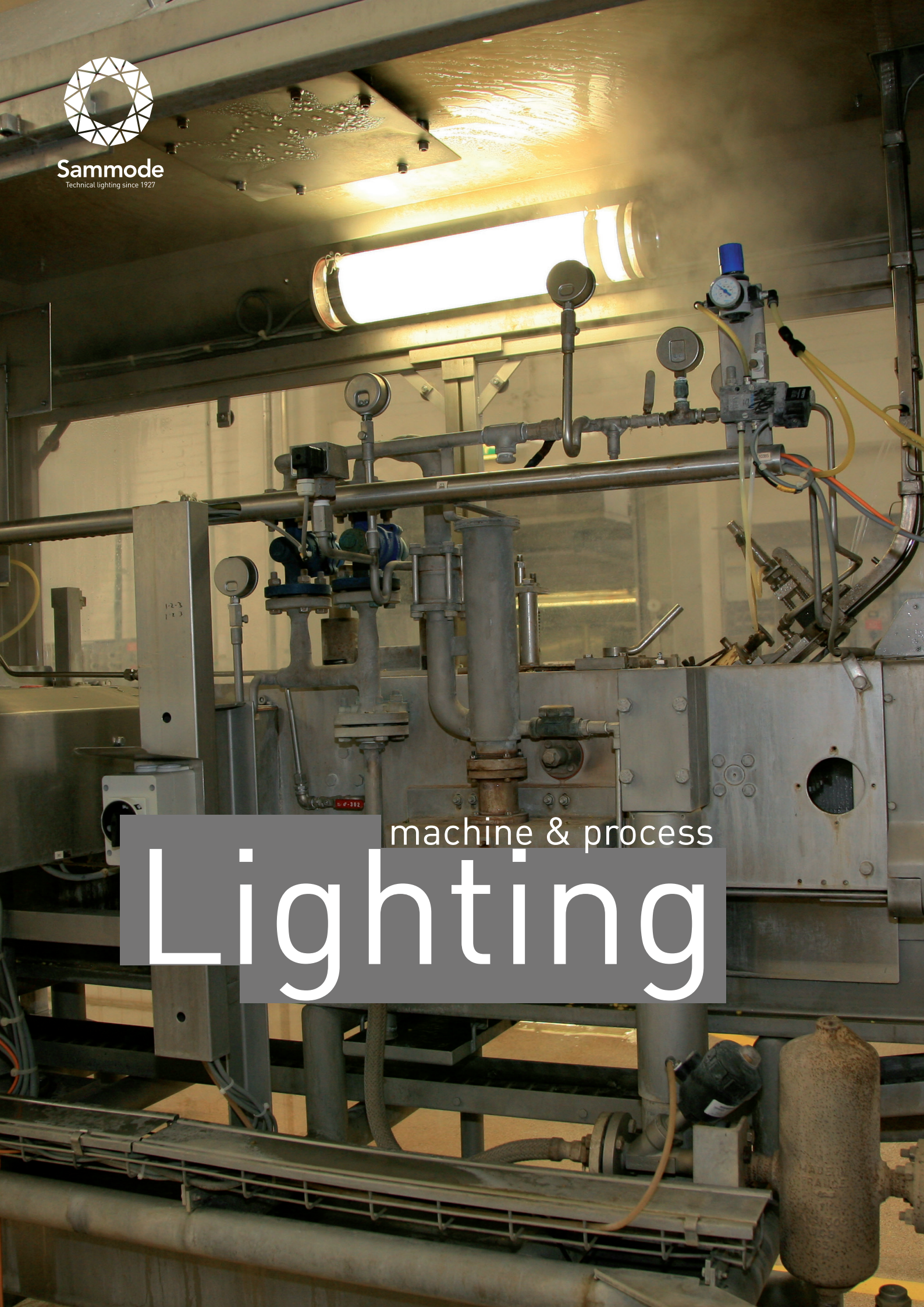


Sammode
Technical lighting since 1927



machine & process

Lighting





TW-20

Specialist

in technical lighting

Specialist in technical lighting, Sammode has been an active partner in this industry since 1927. Our light fittings, meeting high quality and technical standards, are designed so as to obtain an exceptional lifespan under extreme conditions. We are then able to minimize maintenance requirements.

Sammode produces light fittings according to very strict criteria, essential to the machine environment: robustness, resistance and performance. Besides, the luminaires are compliant with the standard EN 1837 while being integrated.

Thanks to product ranges suitable for high and low temperatures, from -30°C to $+60^{\circ}\text{C}$, Sammode offers lighting solutions for all the agri-food processes, meeting quality, security and hygiene standards and procedures in force (HACCP, IFS ...).

5 strong points



IK10

ROBUST

Resulting from our engineering expertise, our luminaires are designed to be shock resistant (IK10). The robustness of the housing, the quality of selected materials and components are a guarantee of long-term investment.



IP

68 69K

IMPERVIOUS

The absolute imperviousness (IP68) of our luminaires maintains their performance during all their lifespan. They resist to high pressure jet cleaning (IP69K).



ok

RESISTANT

The quality of carefully selected materials such as stainless steel or coextruded polycarbonate/methacrylate especially stands chemical aggressions from detergents, oils and hydrocarbons.



°C

EFFICIENT

The light sources (LED, compact fluorescent lamps...) used in our luminaires offer the best compromise between power and space in a given temperature range.



1m

COMPACT

Our tubular light fittings with reduced diameter and length can be integrated in confined spaces and be easily oriented towards the area to be illuminated.

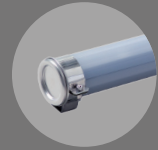
Ranges

-30°C to +60°C

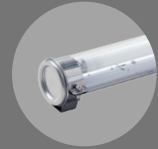
24DC LUMINAIRES

DOPPLER 70 24DC -30°C +60°C
Ø70mm LED light fitting

NIEPCE 70 MO 24DC
Ø70mm light fitting for T8 lamp



p. 6



p. 7

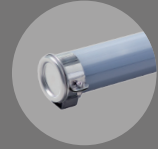
230V LUMINAIRES

DOPPLER 70 230V
Ø70mm LED light fitting

NIEPCE 70 MO
Ø70mm light fitting for T8 lamp

KELVIN 100 MO 230V
Ø100mm light fitting for compact fluorescent lamp

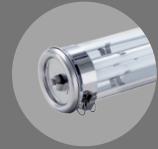
KELVIN 100 MO HT +50°C
Ø100mm light fitting for compact fluorescent lamp



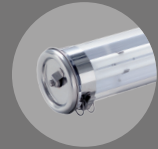
p. 9



p. 10



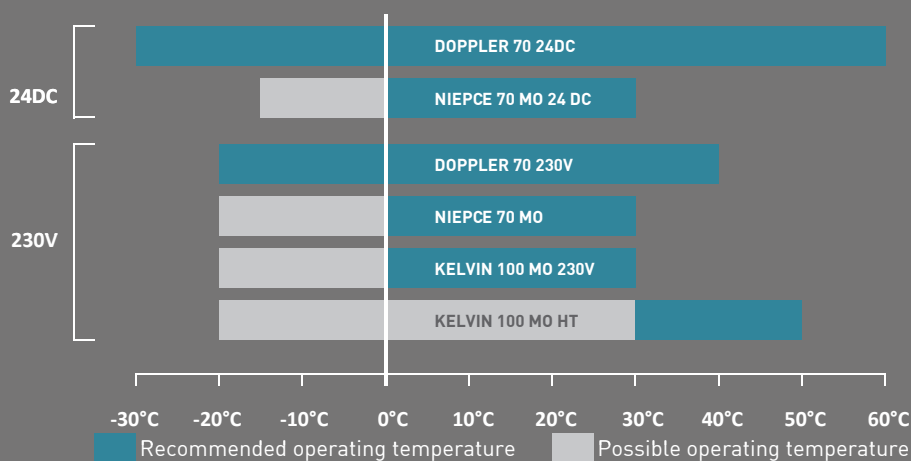
p. 11



p. 12

SELECTION GUIDE

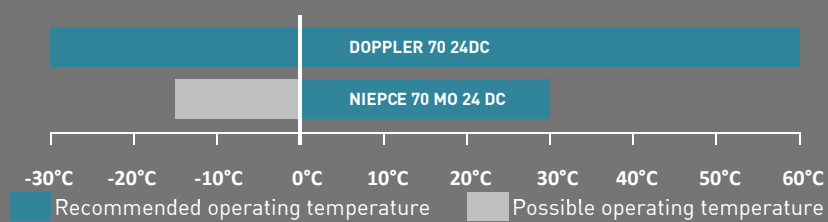
according to power supply and operating temperature

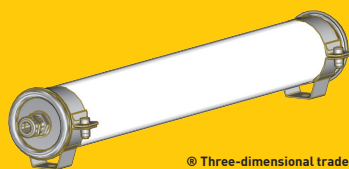


The source length varies according to the lamp power or the number of selected modules. Length indications are available on product pages.

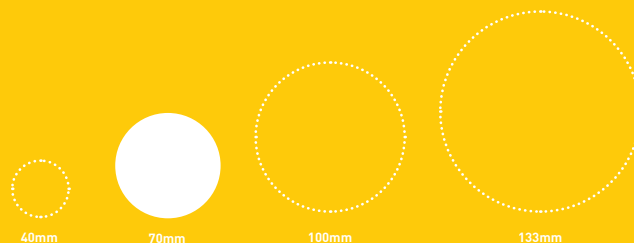
24DC luminaires

Selection guide





© Three-dimensional trademark



DIFFUSER RESISTANT TO LUBRICANTS - LED - 24V - CLASS 3

DOPPLER 70 24DC

SMALL IMPERVIOUS TUBULAR LIGHT FITTING FOR PROCESS LIGHTING

LIGHTING COMFORT

Satin-finish diffuser compliant with EN 1837 applications (no dazzle)

LED TECHNOLOGY

Insensitive to vibrations
Suitable for repeated switch on/off
No stroboscopic effect
No UV emission

TUBULAR

Increased mechanical resistance
Easy to clean
Limited dirt accumulation
360° orientation

IMPERVIOUS (IP68/IP69K)

Absolute imperviousness
Maximal light output
Adapted for pressure cleaning

SMALL LIGHT FITTING

70mm diameter
Lighting over the entire length

DURABLE

High resistance to corrosion and external aggressions
Housing robustness

| | |
|-----------------------|-------------|
| ELECTRICAL CLASS | CLASS 3 |
| POWER SUPPLY | 24V DC |
| FIRE RESISTANCE | 650°C |
| PROTECTION | IP68/IP69K |
| SHOCK RESISTANCE | IK10 |
| OPERATING TEMPERATURE | -30°C +60°C |

ULTRA-LOW VOLTAGE

Beware of voltage drops during your installation dimensioning so as to guarantee the voltage range at the light fitting terminals

DESCRIPTION

HOUSING

- Ø70mm coextruded diffuser in satin-finish polycarbonate/PMMA, resistant to oils and hydrocarbons
- End caps ½ ring press-formed in 304L stainless steel (316L also available)
- Moulded gaskets
- Cable entry with nickel-coated brass cable gland for Ø 5 to 12mm cable

GEAR TRAY

- Black anodized extruded aluminium gear tray for an optimum thermal management
- Electronical industry-type modules developed by SAMMODE equipped with:
 - 6 LEDs regularly spread for optimal light distribution uniformity
 - robust components specific to the industrial market
 - Lifespan: 50 000 hours
- Colour temperature: 4000K

INSTALLATION - MAINTENANCE

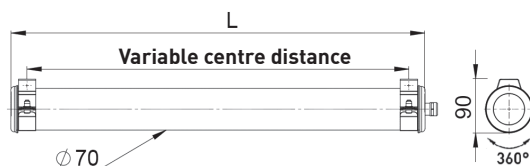
- Connection via 2x4mm² terminal block
- Attachment with 2 bolt-fitted stainless steel straps and closure by HSHC screw, with variable centre distance and allowing 360° orientation
- Also available with a tool-free opening and closure version
- Maintenance: remove the end-cap and slide the guided gear tray
- On request, light fitting provided pre-wired
- Electronic components (LED and driver) have a very long lifetime (50,000 hours) and can be easily replaced to extend the life of the luminaire and contribute to the sustainability of the investment and to environmental protection.

OPTIONS

| DESCRIPTION | OPTION CODE | DESCRIPTION | OPTION CODE |
|--|-------------|--|-------------|
| CABLE ENTRIES | | FINISHINGS | |
| Disconnectable plug | | End caps and fixing straps in 316L stainless steel | MR |
| Straight IP68/IP69K plug with an aluminium threaded ring | PS2 | Butterfly tool-free closing system | FSO |
| Solenoid valve type IP65 angled plug | PB2 | ACCESSORIES | |
| | | Magnet fixing kit | |

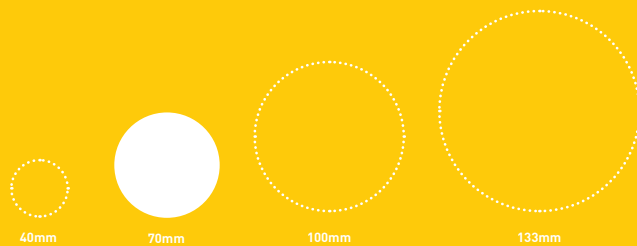
MAIN REFERENCES

| POWER | FLUX (lm) | DESIGNATION | CODE | OPTICS | L (mm) | WEIGHT (kg) |
|-------|-----------|-------------------------------|-----------|---|--------|-------------|
| 5,5W | 390 | DOP70 24DC 1M6L10 POME 113 SA | 1450 0010 |  | 363 | 1,1 |
| 11W | 780 | DOP70 24DC 2M6L10 POME 113 SA | 1450 0020 |  | 613 | 1,7 |
| 16,5W | 1170 | DOP70 24DC 3M6L10 POME 113 SA | 1450 0030 |  | 863 | 2,3 |





© Three-dimensional trademark



HOUSING RESISTANT TO LUBRICANTS - 1 LAMP T8 - 24V - CLASS 1

NIEPCE 70 MO 24DC

SMALL IMPERVIOUS TUBULAR LIGHT FITTING FOR PROCESS LIGHTING

TUBULAR

- Increased mechanical resistance
- Easy to clean
- Limited dirt accumulation
- 360° orientation

IMPERVIOUS (IP68/IP69K)

- Absolute imperviousness
- Maximal light output
- No internal dust accumulation
- Adapted for pressure cleaning

SMALL LIGHT FITTING

70mm diameter

DURABLE

- High resistance to shocks and external aggressions
- Housing robustness
- Quality of the materials and components: long-term investment

| | |
|-----------------------|--------------|
| ELECTRICAL CLASS | CLASS 1 |
| POWER SUPPLY | 24V DC |
| FIRE RESISTANCE | 650°C |
| PROTECTION | IP68 / IP69K |
| SHOCK RESISTANCE | IK10 |
| OPERATING TEMPERATURE | -15°C +30°C |

ULTRA-LOW VOLTAGE

Beware of voltage drops during your installation dimensioning so as to guarantee the voltage range at the light fitting terminals



DESCRIPTION

HOUSING

- Ø70mm coextruded diffuser in satin-finish polycarbonate/PMMA, resistant to oils and hydrocarbons
- Also available in satin-finish version compliant with EN 1837 applications
- End caps ½ ring press-formed in 304L stainless steel (316L also available)
- Moulded gaskets
- Cable entry with nickel-coated brass cable gland for Ø 5 to 12mm cable

GEAR TRAY

- Sheet-steel gear tray fixed with the end cap bearing the cable entries
- 24DC high frequency (>25 kHz) and hot cathode electronic gear unit
- Internal wiring in silicon glass fibre

REFLECTORS

- White powder-coated gear tray acting as a reflector
- Range of technical reflectors in mirror finish aluminium sheeting: intensive (narrow beam), extensive (wide beam)

INSTALLATION - MAINTENANCE

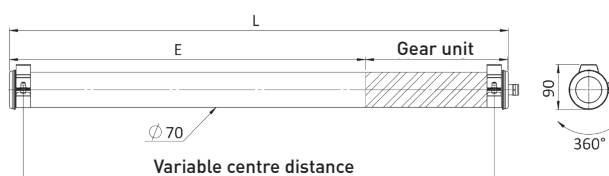
- Connection to 3x2,5mm² disconnectable terminal block
- Attachment with 2 bolt-fitted stainless steel straps and closure by HSHC screw, with variable centre distance and allowing 360° orientation
- Also available with a tool-free opening and closure version
- Maintenance: remove the end-cap and slide the guided gear tray
- On request, light fitting provided pre-wired and 4000K lamp mounted

OPTIONS

| DESCRIPTION | OPTION CODE | DESCRIPTION | OPTION CODE |
|--|-------------|--|-------------|
| CABLE ENTRIES | | FINISHINGS | |
| Disconnectable plug | PB3 | End caps and fixing straps in 316L stainless steel | MR |
| Solenoid valve type IP65 angled plug | | Butterfly tool-free closing system | FSO |
| Straight IP68/IP69K plug with an aluminium threaded ring | PS3 | ACCESSORIES | |
| | | Magnet fixing kit | |

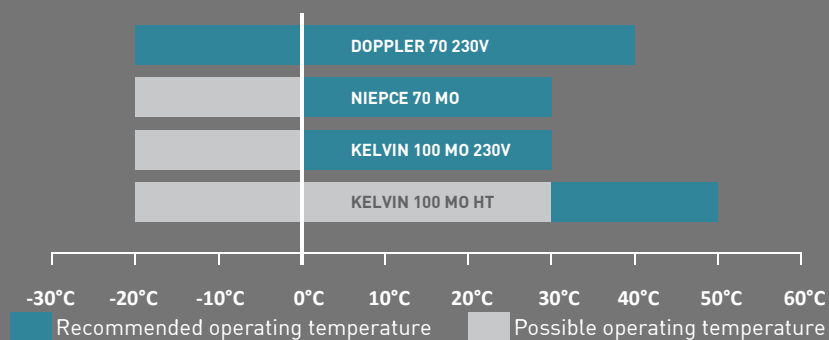
MAIN REFERENCES

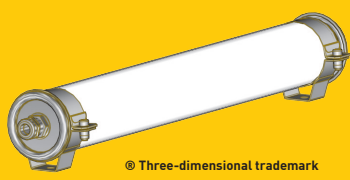
| POWER | DESIGNATION | CODE | OPTICS | L (mm) | WEIGHT (kg) |
|-------|--|-----------|--------|--------|-------------|
| | Without reflector - clear diffuser | | | | |
| 1x18W | NIE70 MO 24DC 118E G13 POME 113 | 1426 0010 | | 998 | 1,7 |
| 1x36W | NIE70 MO 24DC 136E G13 POME 113 | 1426 0050 | | 1608 | 3,5 |
| | Without reflector - satin-finish diffuser | | | | |
| 1x18W | NIE70 MO 24DC 118E G13 POME 113 SA | 1426 0020 | | 998 | 1,7 |
| 1x36W | NIE70 MO 24DC 136E G13 POME 113 SA | 1426 0060 | | 1608 | 3,5 |
| | With intensive reflector - clear diffuser | | | | |
| 1x18W | NIE70 MO 24DC 118E G13 POME 113 RI | 1426 0030 | | 998 | 1,7 |
| 1x36W | NIE70 MO 24DC 136E G13 POME 113 RI | 1426 0070 | | 1608 | 3,5 |
| | With extensive reflector - clear diffuser | | | | |
| 1x18W | NIE70 MO 24DC 118E G13 POME 113 RE | 1426 0040 | | 998 | 1,7 |
| 1x36W | NIE70 MO 24DC 136E G13 POME 113 RE | 1426 0080 | | 1608 | 3,5 |



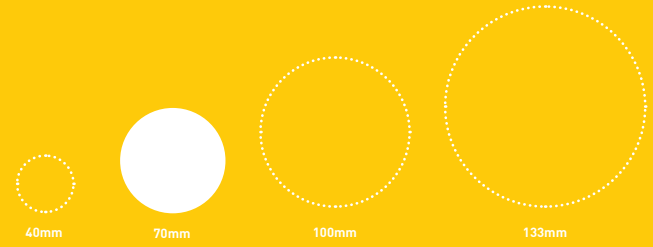
230V luminaires

Selection guide





© Three-dimensional trademark



HOUSING RESISTANT TO LUBRICANTS - LED - 230V - CLASS 2

DOPPLER 70 230V

SMALL IMPERVIOUS TUBULAR LIGHT FITTING FOR PROCESS LIGHTING

LIGHTING COMFORT
Satin-finish diffuser compliant with EN 1837 applications

LED TECHNOLOGY
Insensitive to vibrations
Suitable for repeated switch on/off
No stroboscopic effect
No UV emission

TUBULAR
Increased mechanical resistance
Easy to clean
Limited dirt accumulation
360° orientation

IMPERVIOUS (IP68/IP69K)
Absolute imperviousness
Maximal light output
Adapted for pressure cleaning

SMALL LIGHT FITTING
70mm diameter
Lighting over the entire length

DURABLE
High resistance to corrosion and external aggressions
Housing robustness

| | |
|------------------------------|------------------|
| ELECTRICAL CLASS | CLASS 2 |
| POWER SUPPLY | 220-240V 50/60Hz |
| FIRE RESISTANCE | 650°C |
| PROTECTION | IP68/IP69K |
| SHOCK RESISTANCE | IK10 |
| OPERATING TEMPERATURE | -20°C +40°C |

DESCRIPTION

HOUSING

- Ø70mm coextruded diffuser in satin-finish polycarbonate/PMMA, resistant to oils and hydrocarbons
- End caps ½ ring press-formed in 304L stainless steel (316L also available)
- Moulded gaskets
- Cable entry with nickel-coated brass cable gland for Ø 5 to 12mm cable

GEAR TRAY

- Black anodized extruded aluminium gear tray for an optimum thermal management
- 220-240V 50/60Hz converter on internal sliding gear tray
- Electronical industry-type modules developed by SAMMODE equipped with:
 - 18 LEDs regularly spread for optimal light distribution uniformity
 - robust components specific to the industrial market
 - Lifespan: 50 000 hours
- Colour temperature: 4000K

INSTALLATION – MAINTENANCE

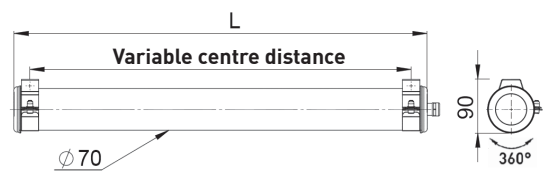
- Connection via 2x1,5mm² terminal block
- Attachment with 2 bolt-fitted stainless steel straps and closure by HSHC screw, with variable centre distance and allowing 360° orientation
- Also available with a tool-free opening and closure version
- Maintenance: remove the end-cap and slide the guided gear tray
- On request, light fitting provided pre-wired
- Electronic components (LED and driver) have a very long lifetime (50,000 hours) and can be easily replaced to extend the life of the luminaire and contribute to the sustainability of the investment and to environmental protection.

OPTIONS

| DESCRIPTION | OPTION CODE | DESCRIPTION | OPTION CODE |
|--|-------------|--|-------------|
| CABLE ENTRIES | | FINISHINGS | |
| Disconnectable plug | | End caps and fixing straps in 316L stainless steel | MR |
| Straight IP68/IP69K plug with an aluminium threaded ring | PS2 | Fermeture sans outil par système papillon | FSO |
| Solenoid valve type IP65 angled plug | PB2 | ACCESSORIES | |
| | | Magnet fixing kit | |

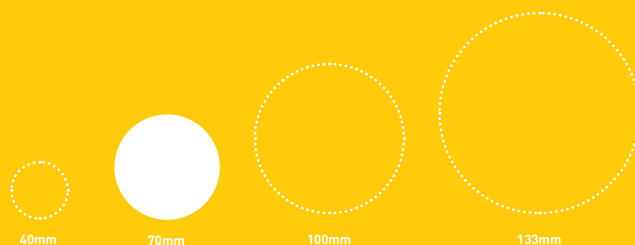
MAIN REFERENCES

| POWER | FLUX (lm) | DESIGNATION | CODE | OPTICS | L (mm) | WEIGHT (kg) |
|-------|-----------|--------------------------|-----------|--------|--------|-------------|
| 6,5W | 390 | DOP70 1M6L10 POME 113 SA | 1451 0030 | | 363 | 1.4 |
| 13W | 780 | DOP70 2M6L10 POME 113 SA | 1451 0010 | | 613 | 2.0 |
| 19W | 1170 | DOP70 3M6L10 POME 113 SA | 1451 0020 | | 863 | 2.6 |





© Three-dimensional trademark



HOUSING RESISTANT TO LUBRICANTS - 1 LAMP T8 - CLASS 1

NIEPCE 70 MO

SMALL IMPERVIOUS TUBULAR LIGHT FITTING FOR PROCESS LIGHTING

TUBULAR

Increased mechanical resistance
Easy to clean
Limited dirt accumulation
360° orientation

IMPERVIOUS (IP68/IP69K)

Absolute imperviousness
Maximal light output
No internal dust accumulation
Adapted for pressure cleaning

SMALL LIGHT FITTING

70mm diameter
Gear at the back of the tray enabling reduced dimensions and lighting over the entire length

DURABLE

High resistance to shocks and external aggressions
Housing robustness
Quality of the materials and components: long-term investment

| | |
|----------------------------|-----------------------|
| ELECTRICAL CLASS | CLASS 1 |
| FIRE RESISTANCE PROTECTION | 650°C IP68 / IP69K |
| SHOCK RESISTANCE | IK10 |
| OPERATING TEMPERATURE | -20°C +30°C |



DESCRIPTION

HOUSING

- Ø70mm coextruded diffuser in satin-finish polycarbonate/PMMA, resistant to oils and hydrocarbons
- Also available in satin-finish version compliant with EN 1837 applications
- End caps ½ ring press-formed in 304L stainless steel (316L also available)
- Moulded gaskets
- Cable entry with nickel-coated brass cable gland for Ø 5 to 12mm cable

GEAR TRAY

- Sheet-steel gear tray fixed with the end cap bearing the cable entries
- High frequency (>40 kHz) and hot cathode (EEI A2) electronic gear unit
- Internal wiring in silicon glass fibre

REFLECTORS

- White powder-coated gear tray acting as a reflector
- Range of technical reflectors in mirror finish aluminium sheeting: intensive (narrow beam), extensive (wide beam)

INSTALLATION - MAINTENANCE

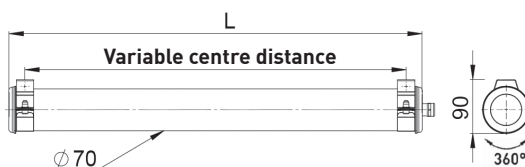
- Connection to 3x2,5mm² disconnectable terminal block
- Attachment with 2 bolt-fitted stainless steel straps and closure by HSHC screw, with variable centre distance and allowing 360° orientation
- Also available with a tool-free opening and closure version
- Maintenance: remove the end-cap and slide the guided gear tray
- On request, light fitting provided pre-wired and 4000K lamp mounted

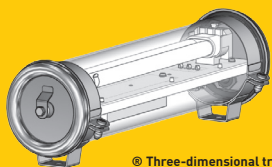
OPTIONS

| DESCRIPTION | OPTION CODE | DESCRIPTION | OPTION CODE |
|--|-------------|--|-------------|
| CABLE ENTRIES | | FINISHINGS | |
| Disconnectable plug | | End caps and fixing straps in 316L stainless steel | MR |
| Solenoid valve type IP65 angled plug | PB3 | Butterfly tool-free closing system | FSO |
| Straight IP68/IP69K plug with an aluminium threaded ring | PS3 | ACCESSORIES | |
| | | Magnet fixing kit | |

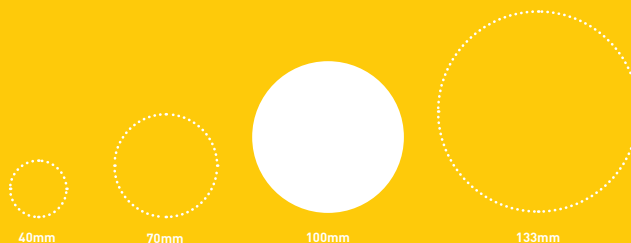
MAIN REFERENCES

| POWER | DESIGNATION | CODE | OPTICS | L (mm) | WEIGHT (kg) |
|-------|--|-----------|--------|--------|-------------|
| | Without reflector - clear diffuser | | | | |
| 1x18W | NIE70 MO 118E G13 POME 113 | 1425 0010 | | 748 | 1,7 |
| 1x36W | NIE70 MO 136E G13 POME 113 | 1425 0060 | | 1358 | 3,3 |
| | Without reflector - satin-finish diffuser | | | | |
| 1x18W | NIE70 MO 118E G13 POME 113 SA | 1425 0040 | | 748 | 1,7 |
| 1x36W | NIE70 MO 136E G13 POME 113 SA | 1425 0070 | | 1358 | 3,3 |
| | With intensive reflector - clear diffuser | | | | |
| 1x18W | NIE70 MO 118E G13 POME 113 RI | 1425 0020 | | 748 | 1,7 |
| 1x36W | NIE70 MO 136E G13 POME 113 RI | 1425 0080 | | 1358 | 3,3 |
| | With extensive reflector - clear diffuser | | | | |
| 1x18W | NIE70 MO 118E G13 POME 113 RE | 1425 0030 | | 748 | 1,7 |
| 1x36W | NIE70 MO 136E G13 POME 113 RE | 1425 0090 | | 1358 | 3,3 |





© Three-dimensional trademark



DIFFUSER RESISTANT TO LUBRICANTS – 1 2G11 COMPACT FLUORESCENT LAMP – 230V - CLASS 1

KELVIN 100 MO 230V

SMALL IMPERVIOUS TUBULAR LIGHT FITTING FOR PROCESS LIGHTING

TUBULAR

Increased mechanical resistance
Easy to clean
Limited dirt accumulation
360° orientation

IMPERVIOUS (IP68/IP69K)

Absolute imperviousness
No internal dust accumulation
Maximal light output
Adapted for pressure cleaning

SAFE MAINTENANCE

Maintenance without interacting with the cable entries preserving imperviousness
Easy opening and closing with just one screw

ROBUST

Mechanical assembly insensitive to external mechanical/chemical aggressions

DURABLE

High resistance to shocks and corrosion
Housing robustness
Quality of the materials and components: long-term investment

DESCRIPTION

HOUSING

- Ø100mm coextruded diffuser in satin-finish polycarbonate/PMMA, resistant to oils and hydrocarbons
- Also available in satin-finish version compliant with EN 1837 applications
- Gaskets moulded
- Cable entry with nickel-coated brass cable gland for Ø 5 to 12mm cable
- End caps ½ ring press-formed in 304L stainless steel (316L also available)

GEAR TRAY

- Sheet-steel gear tray fixed with the end cap bearing the cable entries
- High frequency (>40 kHz) and hot cathode (EEI A2) electronic gear
- Internal wiring in silicon glass fibre

REFLECTORS

- White powder-coated gear tray acting as a reflector
- Range of technical reflectors in mirror finish aluminium sheeting

INSTALLATION – MAINTENANCE

- Connection to 3x4 mm² terminal block
- Attachment with 2 bolt-fitted stainless steel straps and closure by HSHC screw, with variable centre distance and allowing 360° orientation
- Maintenance: remove the end-cap and slide the guided gear tray
- On request, light fitting provided pre-wired and 4000K lamp mounted

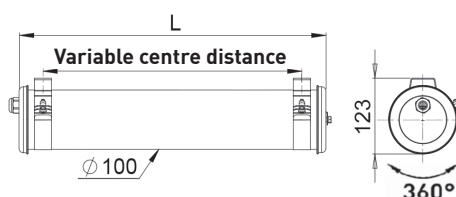
OPTIONS

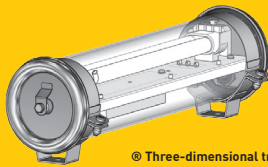
| DESCRIPTION | OPTION CODE | DESCRIPTION | OPTION CODE |
|--|-------------|--|-------------|
| DIFFUSER SHADE | | OPTICS | |
| Satin-finish diffuser | SA | Extensive reflector | RE |
| CABLE ENTRIES | | Reflector with brushed-aluminium louvre | GRD |
| Disconnectable plug | | FINISHINGS | |
| Straight IP68/IP69K plug with an aluminium threaded ring | PS3 | End caps and fixing straps in 316L stainless steel | MR |
| Solenoid valve type IP65 angled plug | PB3 | ACCESSORIES | |
| | | Magnet fixing kit | |

| | |
|-----------------------|-------------|
| ELECTRICAL CLASS | CLASS 1 |
| FIRE RESISTANCE | 650°C |
| PROTECTION | IP68/IP69K |
| SHOCK RESISTANCE | IK10 |
| OPERATING TEMPERATURE | -20°C +30°C |

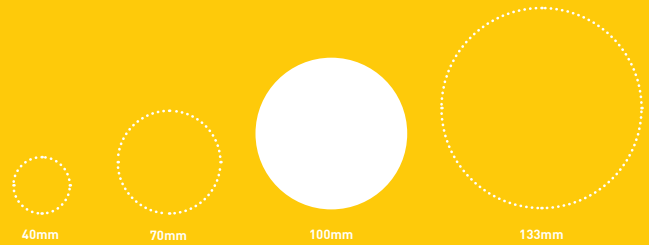
MAIN REFERENCES

| POWER | DESIGNATION | CODE | OPTICS | L (mm) | WEIGHT (kg) |
|-------|--------------------------------|-----------|--------|--------|-------------|
| 1x18W | KEL100 MO 118E 2G11 POME 113LN | 1528 0040 | | 357 | 1,5 |
| 1x24W | KEL100 MO 124E 2G11 POME 113LN | 1528 0050 | | 436 | 1,5 |
| 1x36W | KEL100 MO 136E 2G11 POME 113LN | 1528 0060 | | 519 | 2 |





© Three-dimensional trademark



MaxT 50°C - DIFFUSER RESISTANT TO LUBRICANTS - 1 2G11 COMPACT FLUORESCENT LAMP - 230V - CLASS 1

KELVIN 100 MO HT

IMPERVIOUS TUBULAR LIGHT FITTING FOR HIGH TEMPERATURE PROCESS LIGHTING

TUBULAR

Increased mechanical resistance
Easy to clean
Limited dirt accumulation
360° orientation

IMPERVIOUS (IP68/IP69K)

Absolute imperviousness
No internal dust accumulation
Maximal light output
Adapted for pressure cleaning

SAFE MAINTENANCE

Maintenance without interacting with the cable entries preserving imperviousness
Easy opening and closing with just one screw

ROBUST

Mechanical assembly insensitive to external mechanical/chemical aggressions

DURABLE

High resistance to shocks and corrosion
Housing robustness
Quality of the materials and components:
long-term investment

DESCRIPTION

HOUSING

- Ø100mm coextruded diffuser in satin-finish polycarbonate/PMMA, resistant to oils and hydrocarbons
- Also available in satin-finish version compliant with EN 1837 applications
- Gaskets moulded in Neoprene
- Cable entry with nickel-coated brass cable gland for Ø 5 to 12mm cable
- End caps ½ ring press-formed in 304L stainless steel (316L also available)

GEAR TRAY

- Sheet-steel gear tray fixed with the end cap bearing the cable entries
- Lowloss compensated ferromagnetic gear unit (EEI B1)
- Internal wiring in silicon glass fibre

REFLECTORS

- White powder-coated gear tray acting as a reflector
- Range of technical reflectors in mirror finish aluminium sheeting

INSTALLATION - MAINTENANCE

- Connection to 3x4 mm² terminal block
- Attachment with 2 bolt-fitted stainless steel straps and closure by HSHC screw, with variable centre distance and allowing 360° orientation
- Maintenance: remove the end-cap and slide the guided gear tray
- On request, light fitting provided pre-wired and 4000K lamp mounted

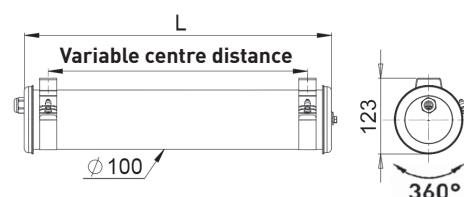
OPTIONS

| DESCRIPTION | OPTION CODE | DESCRIPTION | OPTION CODE |
|--|-------------|--|-------------|
| DIFFUSER SHADE | | OPTICS | |
| Satin-finish diffuser | SA | Extensive reflector | RE |
| CABLE ENTRIES | | Reflector with brushed-aluminium louvre | GRD |
| Disconnectable plug | | FINISHINGS | |
| Straight IP68/IP69K plug with an aluminium threaded ring | PS3 | End caps and fixing straps in 316L stainless steel | MR |
| Solenoid valve type IP65 angled plug | PB3 | ACCESSORIES | |
| | | Magnet fixing kit | |

| | |
|------------------------------|-------------|
| ELECTRICAL CLASS | CLASS 1 |
| FIRE RESISTANCE | 650°C |
| PROTECTION | IP68/IP69K |
| SHOCK RESISTANCE | IK10 |
| OPERATING TEMPERATURE | -20°C +50°C |

MAIN REFERENCES

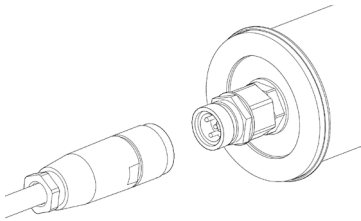
| POWER | DESIGNATION | CODE | OPTICS | L (mm) | WEIGHT (kg) |
|-------|--------------------------------|-----------|--------|--------|-------------|
| 1x18W | KEL100 MO 118C 2G11 POME 113LN | 1528 0010 | | 357 | 2 |
| 1x24W | KEL100 MO 124C 2G11 POME 113LN | 1528 0020 | | 436 | 2 |
| 1x36W | KEL100 MO 136C 2G11 POME 113LN | 1528 0030 | | 519 | 2,5 |





Options and accessories

STRAIGHT IMPERVIOUS IP68/IP69K PLUG



DESCRIPTION

Light fittings supplied with a cable entry via a straight disconnectable plug, lockable with a threaded ring.

CARACTERISTICS

Materials:

- Fixed connector in nickel-plated brass
- Housing in polyamide 6
- Locking ring in black anodized aluminium

CAPACITY

Ø 8 to 10 mm cable

PROTECTION

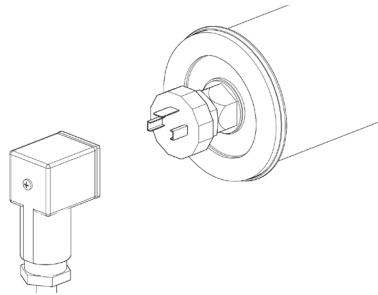
IP68/IP69K

CODE OPTION

Class 1: PS3
Class 2: PS2
Class 3: PS2



IMPERVIOUS IP65 PLUG 90° ANGLE



DESCRIPTION

Light fittings supplied with a cable entry via a disconnectable plug at a 90° angle.

CARACTERISTICS

Materials:

- Fixed connector in nickel-plated brass
- Housing in polyamide 6
- Locking screw in zinc-plated steel

CAPACITY

Ø 6 to 13 mm cable

PROTECTION

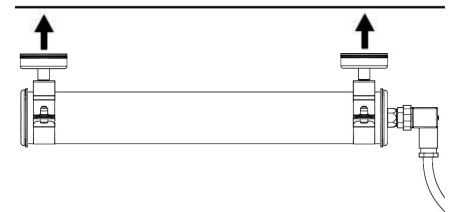
IP65

OPTION CODE

Class 1: PB3
Class 2: PB2
Class 3: PB2



MAGNETIC FIXING KIT



DESCRIPTION

Kit made up of 2 magnetic feet enabling to temporarily fix the fittings to metallic walls
Fasteners for strap fixing included

CARACTERISTICS

Materials:

- Flat shielded gripper magnets in hard ferrite with threaded ring (M8)
- Shielding in galvanized mild steel
- Thermostable up to +100°C
- Traction force of 320N by magnet



Technical features

COMPOSITE DIFFUSER

We have developed a diffuser in polycarbonate covered with a coextruded methacrylate layer to get the advantage of both an exceptional mechanical protection and an excellent resistance to chemicals:

- The inner layer offers the mechanical resistance of polycarbonate (IK10, 20 Joule)
- The outer layer in methacrylate offers the resistance to detergents and hydrocarbons (cutting oil, lubricant ...)
- The methacrylate shade used is compliant with the laws concerning plastic materials and articles intended to come into contact with foodstuffs

Its properties make this diffuser particularly suitable for industry and agri-food industry.

SPECIFIC LED MODULE

Our LED modules have been specifically developed for the machine lighting application, giving priority to the robustness necessary to industrial environment.

The result:

- A technology insensitive to vibrations, as well as to repeated switch-ons and -offs
- A stability of light performances from -30°C to +60°C
- No UV emissions
- No stroboscopic effect
- A component life span of more than 50 000h thanks to the good thermal management of our extruded aluminium

EN 1837

The respect of standard EN1837 "Safety of machinery – Integral lighting of machines" is mandatory for any machine manufacturer. It notably defines the demands for lighting devices integrated to machines.

STANDARD REQUIREMENTS

Illumination

The average illumination must be at least of 500 lx.

Dazzle

The integrated lighting system must avoid any dazzle of the user.

Stroboscopic effect

The system must be designed so as to avoid stroboscopic effect likely to cause dangerous situations by changing the perception of movements from the rotary machines.

Optics

To minimize the premature aging of optics and the dust accumulation from the source and light fitting.

OUR SOLUTIONS

Selection of light sources giving the best compromise between power and space (LED, compact fluorescent lamps...)

Satin-finish diffusers for all our product ranges
Louvres for KELVIN 100 MO ranges

Direct current for DOPPLER 70 ranges
High-frequency ballast for NIEPCE 70 T8 MO / KELVIN 100 MO 230V ranges

The absolute imperviousness (IP68) of products preserves their electrical and optical performances

To optimize your implementation and the choice of light fittings according to your constraints, please contact SAMMODE or our local representative.



Sammode

24 rue des Amandiers
F-75020 Paris
T +33 (0)1 43 14 84 90
F +33 (0)1 43 14 31 46
enquiry@sammode.com
www.sammode.com