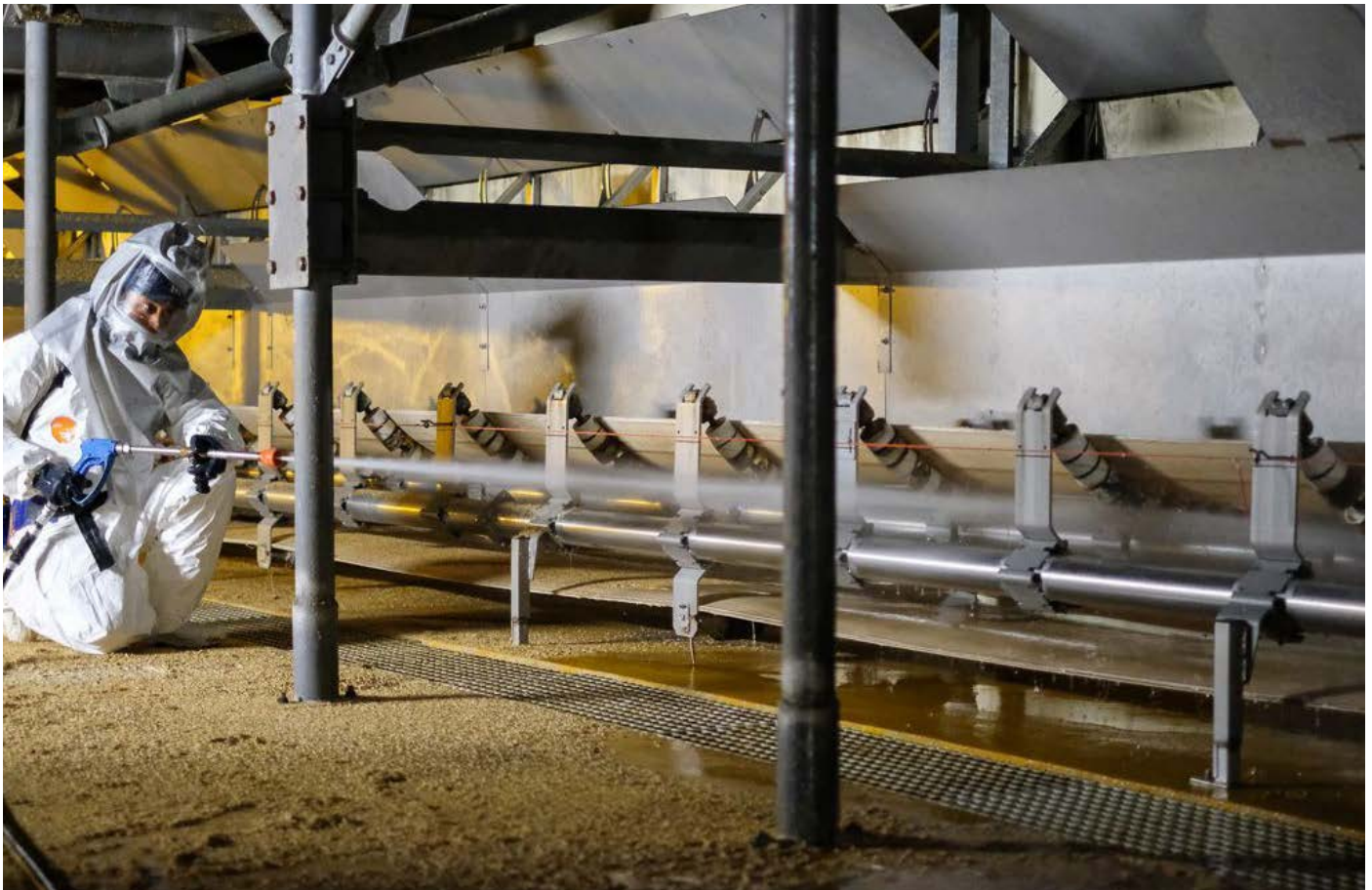


Malting Plants



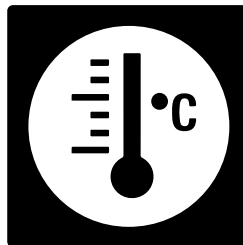


High pressure cleaning



Completely sealed IP68/69K :

- IP68 - 4 metres depth
- No internal dust
- IP69K to resist high-pressure cleaning



Resistant to high temperatures

- Luminaires designed to resist thermal expansion
- Wiring and high-temperature components



Solutions that meet the requirements of agri-food standards

- All our products play a part in the IFS or BRC and HACCP compliance of your agri-food site by meeting the requirements of these lighting standards

The Benefits

Subject to the very highest standards of hygiene, the agri-food industry presents a particularly demanding environment for equipment and lighting. With intensive cleaning, vibrations, and high and low temperatures, lighting systems in the agri-food industry have to cope with numerous constraints. Sammode, a specialist in lighting in difficult environments, offers durable, robust solutions whilst guaranteeing the levels and quality of lighting required to ensure safety on site.

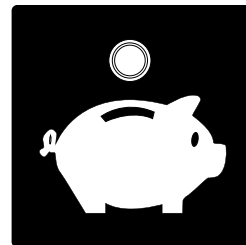
Sammode guarantee

Sammode commits to the reliability and durability of its luminaires: With their experience in extreme environments, Sammode offers you long-lasting solutions guaranteeing up to 8 years of 24/7 operation.



Sustainable solutions

- Maintainability and interchangeability of the components
- Industrial electronic components
- Mechanical design resistant to vibrations



Optimisation of the Total Cost of Ownership

- Sustainable and maintainable solutions
- Reduced installation and maintenance costs
- Luminaires with an exceptional service life

An enclosure to withstand all tests

Enclosure ultra-resistant to chemical aggressions

Unique solution of a polycarbonate housing covered by co-extrusion of PMMA, combining the chemical resistance of PMMA and the mechanical resistance of polycarbonate IK 10.
Metal parts in 304L Stainless Steel as standard or 316L Stainless Steel for enhanced corrosion resistance.



Sealed IP68/IP69K

Thanks to its tubular shape, an axial clamping systems by means of a central screw and a unique three-level gasket, long-term water resistance of the luminaire is guaranteed, no matter how many openings or closings.

Designed to resist shocks and vibrations

Resistant polycarbonate IK10 enclosure and mechanical structure resistant to vibrations in conformity with vibration standard IEC 60068-



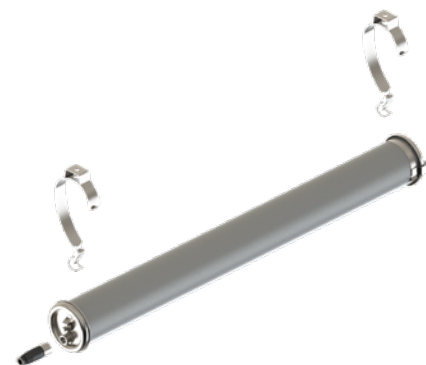
Comfort and optical performance

High-performance LED integration ensures quality lighting thanks to an IRC>80 and up to 70,000 hours of service life at L80/B50.

Output power, intensive optics, optical diffusion: each solution is adapted to its destination application in order to guarantee lighting levels all while optimising the amount of luminaires.

Rapid installation and maintenance system outside the process area

- Installation flexibility: luminaires can be rotated 360° within the mounting brackets
- Easy maintenance: quick-release brackets and plugs
- Reduced intervention on site, no loss of parts.



Selection guide

Application area	Requirements	Products
Germination Vessel, soaking	Humid areas Dusty areas Pressure washing Vibrations	- CUGNOT Temperature > = 50°C
High temperature lighting		
High temperature area Drying area		- JOULE up to 70°C - PAULI HT 100 up to 100°C
Emergency lighting		
	Autonomous block Central source	- MAXWELL S1H MAXWELL S3H - MAXWELL LSC
Lighting in Hazardous Areas		
Battery loading zone Storage silo	Zone 1 Zone 2, 21-22	- ALDER - JAMIN

*Luminaires supplied with a standard glass body, for polycarbonate/methacrylate options, contact us.

Durable and sustainable solutions

- As a designer-manufacturer, Sammode is committed to providing you with a continuity of existing solutions, with luminaires which are sustainable and evolving.
- Light sources, electronic circuits and mechanical structure: every component is designed to last and be replaceable.



Soaking and Germination Areas



Industrial production of single malt, credits: Neznam



Cugnot



Coulomb

With their IP68 imperviousness, Sammode luminaires guarantee optimal protection of the light sources in particularly humid atmospheres. The components are protected from external aggressions and moisture, ensuring sustainable lighting quality and limited maintenance. Their IP69K protection allows for high pressure jet cleaning. A large range of luminaires meets many requirements: general lighting, task lighting, emergency lighting. As such, you benefit from a comprehensive solution for your most extreme areas.

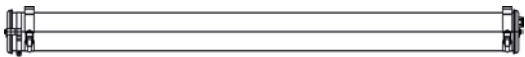
Kilning / Drying Areas



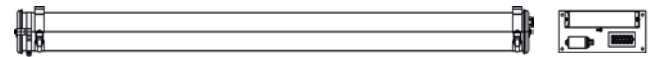
Cugnot



Joule



Pauli HT 80



Pauli HT 100

With over 70 years of experience in the tough industry, Sammode has developed solutions that can withstand temperatures up to 200°C. Each Sammode solution is tested and validated to resist thermal shocks, mechanical deformations and to avoid premature aging of components:

- Its closure system that allows for thermal shock expansions to be absorbed even at very high temperatures
- Choice of highly resistant and efficient industrial components
- Ageing and temperature testing of materials and components to guarantee maximum service life
- Integration of the light engine and source adapted according to temperatures

Sammode is therefore the only manufacturer to provide LED IP68/IP69K solutions for a room temperature up to more than 70°C.

Grain silo / Hazardous Areas



Grain storage in silos, credits: X.Breguet



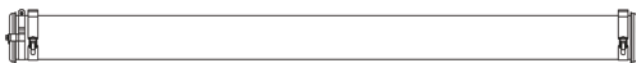
Field silos, credits: Gerenme



Sabatier



Jamin



Alder

Sammode provides impervious and resistant lighting solutions for Zones 21 and 22 (silos) and Zones 1 and 2 (battery rooms, fuel). Their tubular shape limits the deposit of dust on the surface of the luminaire. Their IP68 sealing prevents internal dust and thus protects the light engine to guarantee long service life. Easy to install, they are lighter than many other hazardous area luminaires on the market. Their tubular shape can be placed vertically or horizontally; they can easily be removed for maintenance outside of processing areas.



Sabatier (POME)  



Alder  



Jamin  



Cugnot



Maxwell



Pauli HT/ HT 100



Joule

Options



213 option
(two cable entries)



CHT3 cord



PS3 socket



316L Stainless
Steel

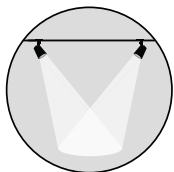
Sammode, an expert at your side

Whether it is a new installation or a renovation, designing an optimal and durable lighting installation is a matter for a specialist. Like any long-term investment, it requires good support to make the right choice. Sammode's teams, experts in industrial lighting, are committed and stand by your side throughout your project to advise you on the best solution to implement.



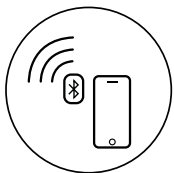
Diagnosis and requirements

After an on-site analysis of the operating conditions, installation constraints or other special requirements, we choose together the most suitable models from the wide range of Sammode solutions.



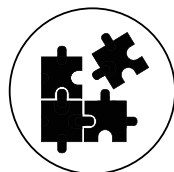
Lighting studies

Our design office carries out lighting studies in order to optimise your installation with regard to lighting levels, lighting comfort, the area to be lit and the layout.



Control systems

To reduce your energy bill and allow better control of your installation, our experts offer you the energy management solutions best suited to your situation.



Development of special products

As a designer-manufacturer, we systematically study the best technical solutions and know how to adapt them to meet your needs.



On-site testing and support

We offer our clients a complete project follow-up and regularly test our solutions on site to verify the requirements.

For over 90 years, the largest industrial groups have entrusted Sammode with the task of illuminating their installations. Choosing Sammode means choosing a trusted partner to bring your project to a successful conclusion with complete peace of mind.

References

Cargill	United States
Coopers	Australia
Groupe Soufflet	France
Holland Malt	Netherlands
Intermalta	Spain
IREKS	France
Mouterij Dingemans	Belgium
Malteries franco-belges	France
Malteurop	France
Mouterij Dingemans	Belgium
Unicer	Portugal

Sammode, Hoffmeister and Sill form a new alliance: SHS Lighting, the European specialist in technical lighting.

Industrial and family-owned, our three companies share decades of expertise, innovation and excellence. Our lighting expertise sets the benchmark. It defines our uniquely high standards, allowing us to guarantee the precision, performance, reliability and long-term robustness of all our products, with the utmost flexibility and a particular attention to design.

We are at the same time designers, manufacturers and technical advisors. When clients choose one of our products, they get more than a light fixture: they acquire intelligence and service.

Contact

Sammode, Hoffmeister, SILL

Headoffice France
24, rue des Amandiers
75020 Paris
T +33(0) 1 43 14 84 90

info@sammode.com
enquiry@sammode.com

Headoffice Germany
Gewerbering 28-32
58579 Schalksmühle
T +49 (0) 23 55 50 41 400

mail@hoffmeister.de

sammode.com
studio.sammode.com
hoffmeister.de
sill-lighting.com



@sammode.lighting
@hoffmeister.lighting
@sill.lighting

Subject to changes.
©Sammode, Hoffmeister, Sill
07/2020.