



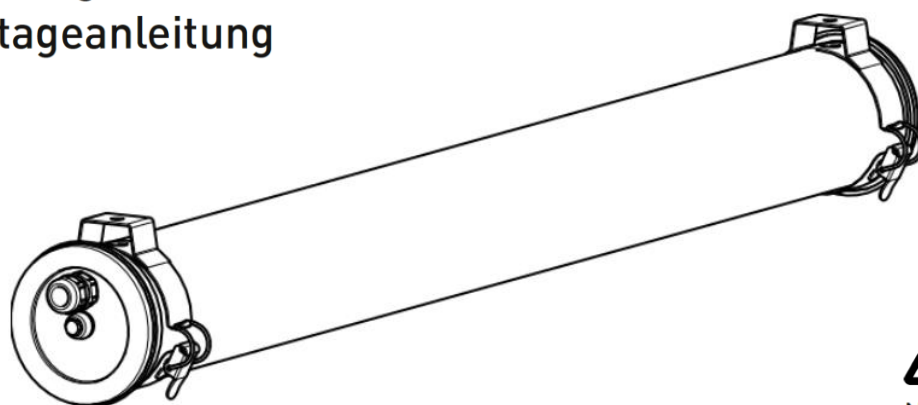
Sammode
Éclairage technique depuis 1927

BRUEGHEL 100/133

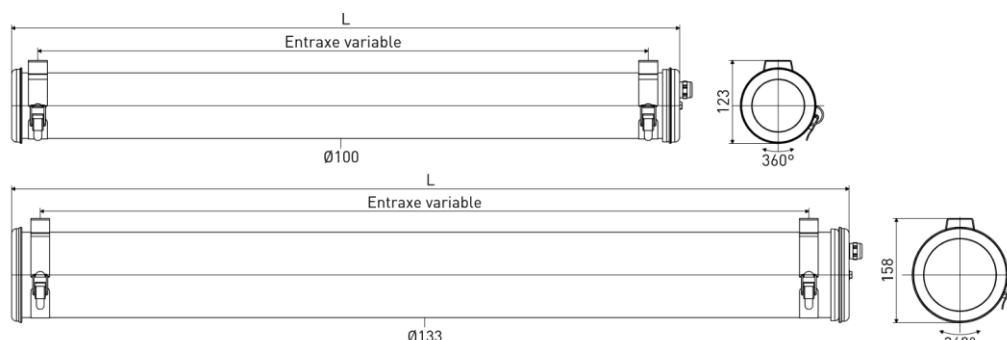
Notice de montage

Mounting instruction

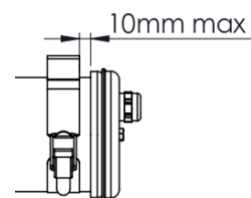
Montageanleitung



Ne pas ouvrir sous tension
Do not open when energized
Nicht unter Spannung öffnen

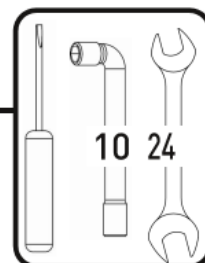


SI option :

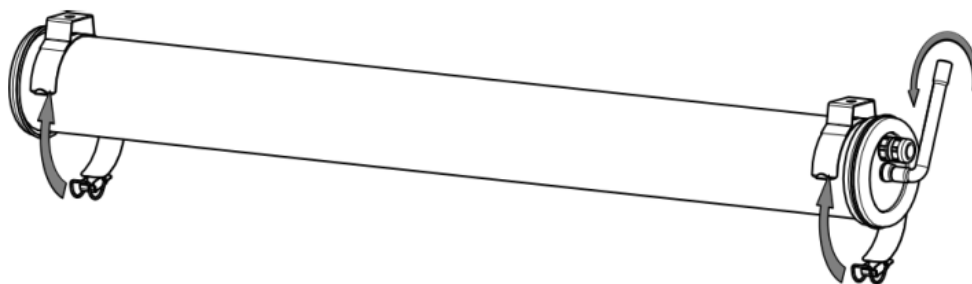


	Ø	L	Entraxe max	SI option (sensor)		Poids
				L	Entraxe max	
	(mm)	(mm)	(mm)	(mm)	(mm)	(kg)
BRUEGHEL	100	1018	923	1103	1008	2,8
BRUEGHEL	100	1318	1223	1403	1308	3,3
BRUEGHEL	100	1618	1523	1703	1608	4,1
BRUEGHEL	133	995	900	1080	985	3,9
BRUEGHEL	133	1295	1200	1380	1285	4,9
BRUEGHEL	133	1595	1500	1680	1585	5,5

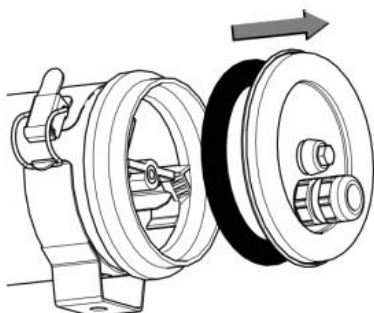
Installation & raccordement / Wiring / Verkabelung



1.

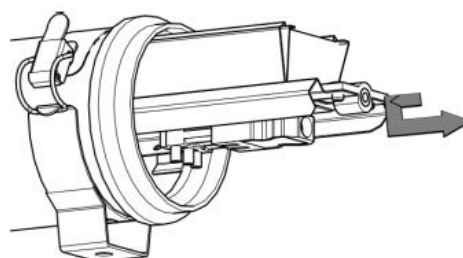


2.

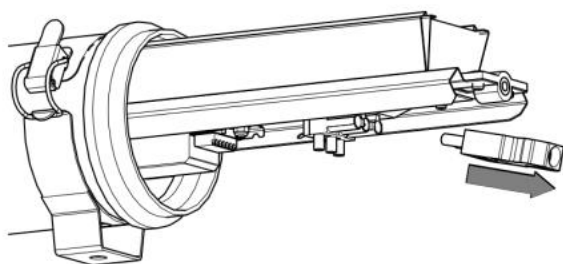


3.

Lors de la manipulation de la platine, positionner la partie éclairante vers le haut, afin d'éviter toute rayure sur le corps.
When handling the gear plate, put the lighting part upwards, to avoid scratches in the body.

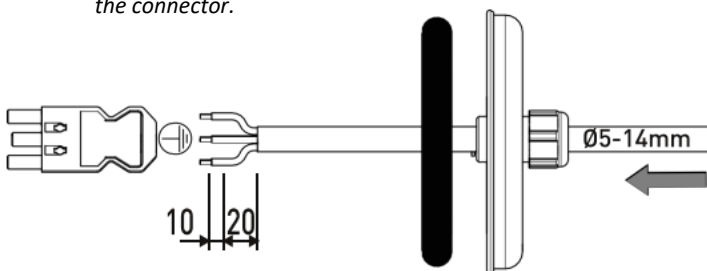


4.

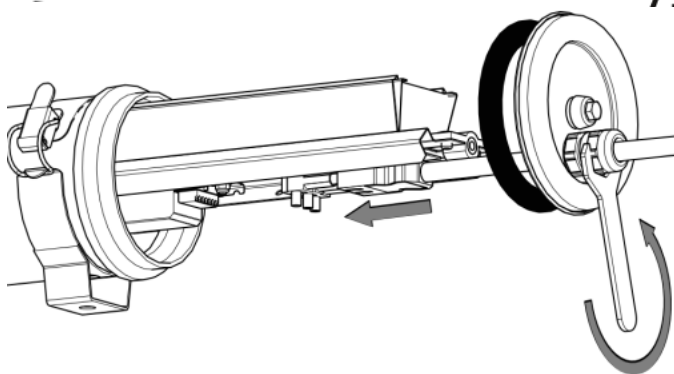


5.

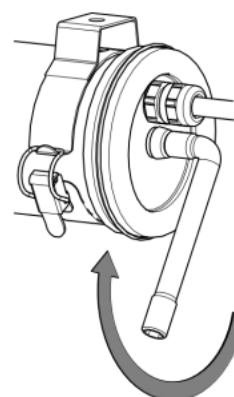
Pour raccorder les câbles dans le connecteur, utiliser un tournevis plat. Use a flat-head screwdriver to plug cables in the connector.



6.



7.



Ce produit présente des qualités renforcées quant à la résistance aux chocs et aux UV mais peut présenter des traces d'extrusion internes et une sensibilité à la rayure.
This product has enhanced impact and UV resistance qualities but may show traces of internal extrusion and sensitivity to scratching.

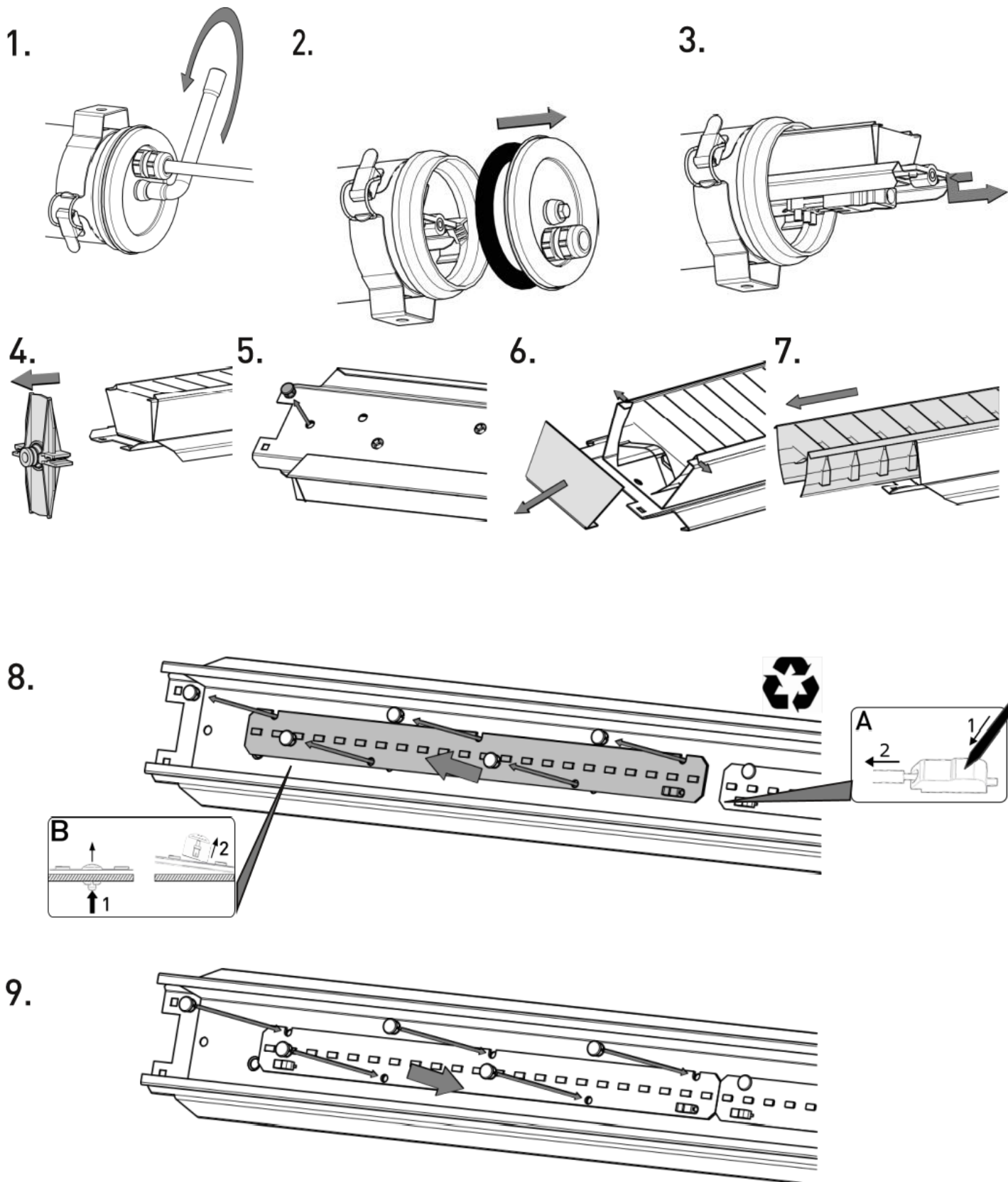
Maintenance

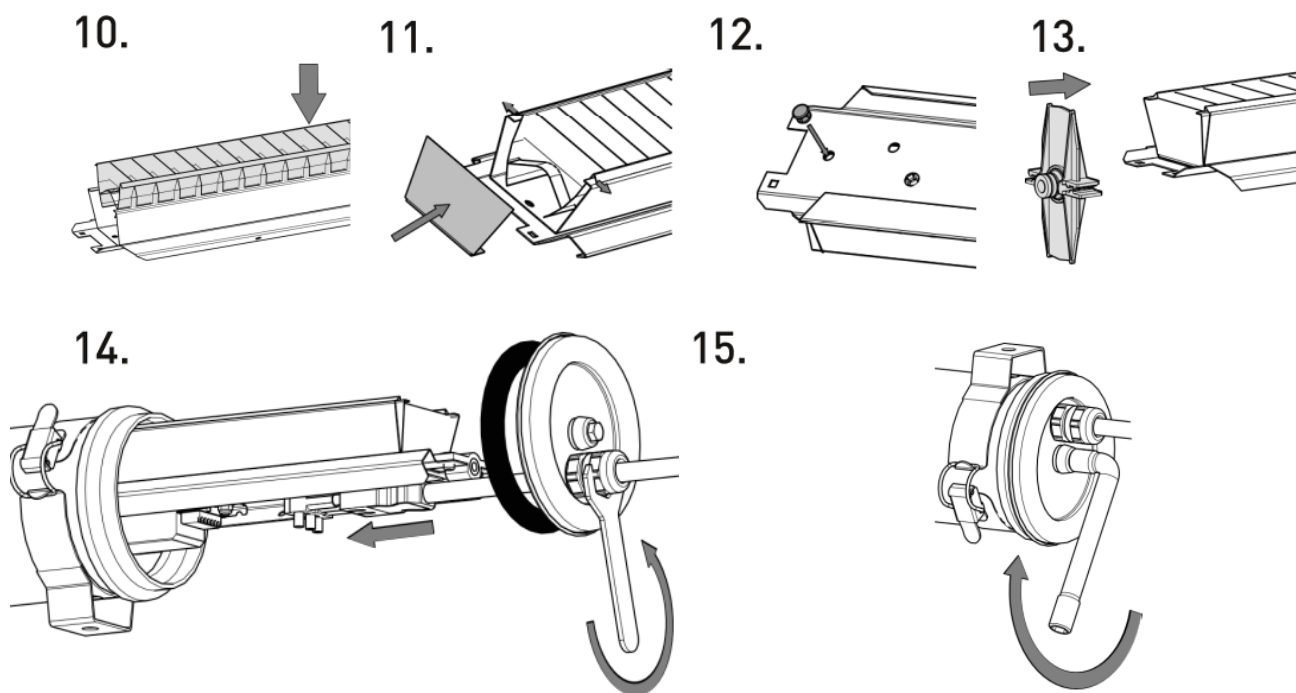
Maintenance / Wartung

10

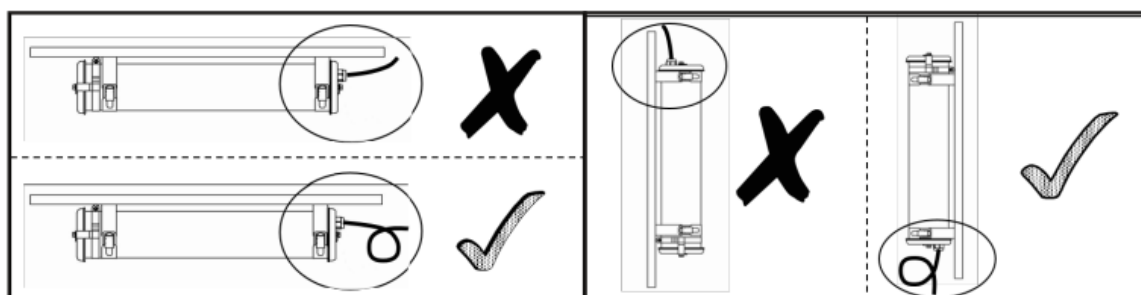


Ne pas ouvrir sous tension
Do not open when energized
Nicht unter Spannung öffnen

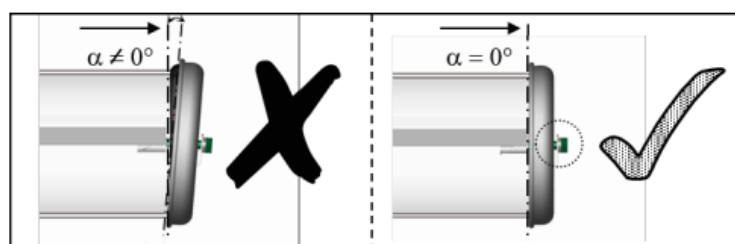




1. Position & câble / Position & cable / Position & Kabel



2. Flasques / End caps / Endkappen



3. Vis centrale / Central screw / Zentrale Schraube

