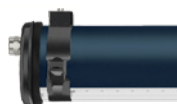


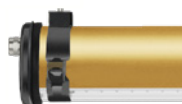
Options and accessories :



Coal finish
End caps & fixing straps



Coal finish and petrol
aluminium gear unit cover



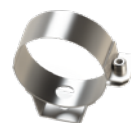
Coal finish and brass
aluminium gear unit cover



Pre-cabling
braided tinned copper cable

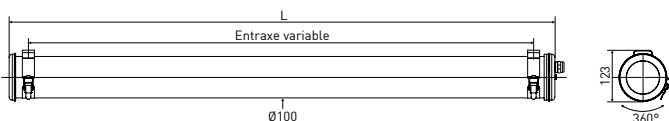


Pre-cabling
with cable plate kit



Fixing straps with HSHC
screw

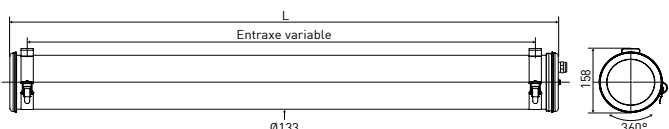
Brueghel direct-indirect Ø100 / Ø133



Principal part numbers Ø100

Lumen (lm)	L(mm)	T(K)	Designation	Code	Cons.(W)
No dimming flux direct / flux indirect					
3200	1018	3000	BRUEGHEL 100 S 1018 2100/1100-830 CRS SUSP	42047190	28
4200	1318		BRUEGHEL 100 S 1318 2800/1400-830 CRS SUSP	42047191	36
5300	1618		BRUEGHEL 100 S 1618 3500/1800-830 CRS SUSP	42047192	45
DALI dimming					
3200	1018	3000	BRUEGHEL 100 S 1018 2100/1100-830 2RD CRS SUSP	42047193	28
4200	1318		BRUEGHEL 100 S 1318 2800/1400-830 2RD CRS SUSP	42047194	36
5300	1618		BRUEGHEL 100 S 1618 3500/1800-830 2RD CRS SUSP	42047195	45
Push-button dimming					
3200	1018	3000	BRUEGHEL 100 S 1018 2100/1100-830 2RS CRS SUSP	42047196	28
4200	1318		BRUEGHEL 100 S 1318 2800/1400-830 2RS CRS SUSP	42047197	36
5300	1618		BRUEGHEL 100 S 1618 3500/1800-830 2RS CRS SUSP	42047198	45

These luminaires are equipped with 2 drivers, to independently control the direct and indirect flux. Therefore, a minimum 4-wire connection is recommended.



Principal part numbers Ø133

Lumen(lm)	L(mm)	T(K)	Designation	Code	Cons.(W)
No dimming flux direct / flux indirect					
3600	995	3000	BRUEGHEL 133 S 995 2400/1200-830 CRS SUSP	43027210	31
4800	1295		BRUEGHEL 133 S 1295 3200/1600-830 CRS SUSP	43027211	41
6000	1595		BRUEGHEL 133 S 1595 4000/2000-830 CRS SUSP	43027212	48
DALI dimming					
3600	995	3000	BRUEGHEL 133 S 995 2400/1200-830 2RD CRS SUSP	43027213	31
4800	1295		BRUEGHEL 133 S 1295 3200/1600-830 2RD CRS SUSP	43027214	41
6000	1595		BRUEGHEL 133 S 1595 4000/2000-830 2RD CRS SUSP	43027215	48
Push-button dimming					
3600	995	3000	BRUEGHEL 133 S 995 2400/1200-830 2RS CRS SUSP	43027216	31
4800	1295		BRUEGHEL 133 S 1295 3200/1600-830 2RS CRS SUSP	43027217	41
6000	1595		BRUEGHEL 133 S 1595 4000/2000-830 2RS CRS SUSP	43027218	48

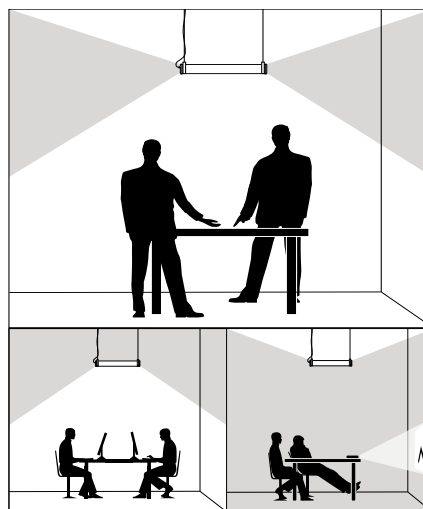
These luminaires are equipped with 2 drivers, to independently control the direct and indirect flux. Therefore, a minimum 4-wire connection is recommended.

Specifications

Technical Data	
Light source	<ul style="list-style-type: none"> High-efficiency removable LED modules (CRI>80, 3 SDCM) 50 000h L80/B10 at 25°C Photobiological safety: no risk (Group 0)
Optics	<ul style="list-style-type: none"> Low glare louvre with reflector and louvers in high performance aluminium Specific satin-finish primary diffuser optics Light mixing chamber
Light comfort	<ul style="list-style-type: none"> Very low glare: UGR ≤19 Very low luminance, work on screen compatible: L65°≤1500cd/m². Longitudinal glare control: 30° in Ø100, 40° in Ø133 Transversal glare control: 30°
Heat management	Passive heat sink in aluminium
Control gear	Constant current driver
Rapid installation	
Connection	<ul style="list-style-type: none"> With nickel-coated brass cable gland for cable Ø 5-14 mm To a 5 x 2,5 mm² disconnectable terminal block
Closing	Quick closing with just one screw
Fixing	2 stainless steel fixing straps (with variable centre distance)
Easy maintenance	
LED engine maintenance	<ul style="list-style-type: none"> Quick opening and closing with just one screw Patented sliding maintenance system Easily removable LED modules and driver
Materials and finishes	
Gear tray	Internal grey powder coated steel gear tray RAL 9006
Housing	Coextruded polycarbonate/PMMA diameter 100 or 133 for indoor and outdoor
End caps, fixing straps	304L stainless steel
Gaskets	Moulded EPDM gaskets

Version July 2020

Pendant low glare direct/indirect light fitting	
Light output	3200 to 6000 lm
Length	995 to 1618 mm
UGR	≤19



Technical Data

Power supply	220-240 V 50/60Hz
Electrical class	Class II
Operating temperature	-20°C to +35°C
Imperviousness	IP66, IP68, IP69K
Shock resistance	IK10
Fire resistance	650°C



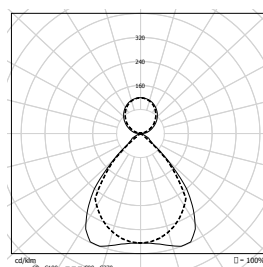
Options

Finishes	
End caps & straps painted Coal	COAL
RAL7021	
Aluminium gear unit cover	CRC/G/B/P
Copper/Gold/Brass/Petrol	
Color temperature and CRI	
2700K	827
4000K	840
IRC90	On request
Electrical Class	
Class I	CL1
Materials	
Polycarbonate housing (960°C)	PO
Fixings	
Fixing straps with HSHC screw	BRV

Accessories

Stainless steel cable plate kit (IP40)	CP00481
Pre-cabing 3m 3G1.5 (3 wires)	CAB0008
Braided tinned copper cable	
Pre-cabing 3m 5G1.5 (5 wires)	CAB0011
Braided tinned copper cable	

Photometry



ULR=33%

info@sammode.com | sammode.com