

CUGNOT

Technology	LED
Opt. temp.	50°C
Light output	1850 to 11100 lm
Control gear	Industrial lighting

Key features

Plug & Play installation by disconnectable plug
Durable and maintainable luminaire
Long maintenance intervals
Resistant to aggressive detergents and chemicals
Very high resistance to vibrations
Resistant to outdoor UV rays



Options

Code Ø100mm Ø133mm

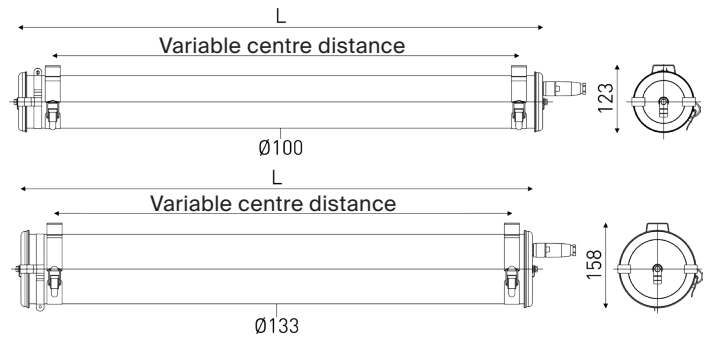
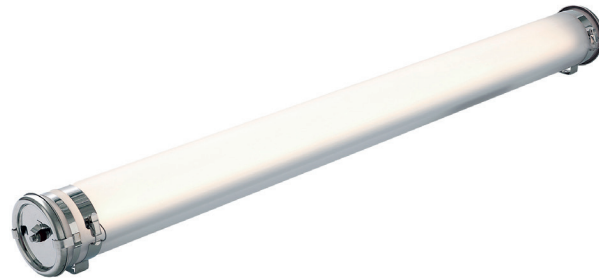
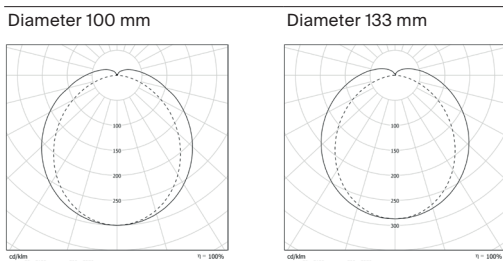
Control gears			
Electronic control unit for DALI dimming	RD	●	●
Colour temperature			
3000 K	830	●	●
5000 K	850	●	●
Finishings			
End caps and fixing straps in stainless steel 316 L	MR	●	●
Housing			
Polycarbonate	PO	●	●
Fixings			
Reinforced fixing straps with HSHC screw	BRV	●	●
Shock-resistant fixing straps with HSHC screw	BAC	●	●
Black polyamide cable entries			
1 cable gland - cable Ø: 5 to 12 mm	113	●	●
1 cable gland - cable Ø: 7 to 14 mm	116	●	●
2 cable glands - cable Ø: 5 to 12 mm	213	●	●
2 cable glands - cable Ø: 7 to 14 mm	216	●	●
Nickel-plated brass cable entries			
1 cable gland - cable Ø: 5 to 14 mm	113LN	●	●
2 cable glands - cable Ø: 5 to 14 mm	213LN	●	●
Disconnectable cable (length 0.80 m)			
Output cord with 3-pin	CW3	●	●
WIELAND plug		●	●

● Compatible ○ On request - Incompatible

Accessories

Extension kit (5 or 20cm) for compliance (APSAD)	●	●
Protective covers	●	●
Offset fixings	●	●

Photometry



Main references

Diameter 100 mm						
Light output* (lm)	Designation	Code	P (W)	T (K)	L (mm)	
1850	CUG100 12H840 POME PS3 SA BRS	3103 0020	16	4000	697	
2775	CUG100 13H840 POME PS3 SA BRS	3103 0040	24		1007	
3700	CUG100 14H840 POME PS3 SA BRS	3103 0060	32		1307	
4625	CUG100 15H840 POME PS3 SA BRS	3103 0080	39		1607	
5550	CUG100 16H840 POME PS3 SA BRS	3103 0100	46		1850	
Diameter 133 mm						
Light output* (lm)	Designation	Code	P (W)	T (K)	L (mm)	
5550	CUG133 23H840 POME PS3 SA BRS	3203 0020	44	4000	987	
7400	CUG133 24H840 POME PS3 SA BRS	3203 0040	58		1287	
9250	CUG133 25H840 POME PS3 SA BRS	3203 0060	72		1587	
11100	CUG133 26H840 POME PS3 SA BRS	3203 0080	86		1850	

* Light output of the luminaire

Specifications

Technical data	
Light source	High-efficiency LED modules 70,000 h L80/B10 at max. operating temperature Replaceable LED modules CRI > 80
Optics	Special LED-rated satin diffuser
Heat management	Aluminium heat sink
Control gear	Robust industrial-lighting electronic driver, non-dimmable Resistance to voltage surge: 320 V AC, 48 h Supports voltage peaks < 4kV
Power supply	220-240 V 50/60 Hz and 176-280 V DC Compatible with central source
Electrical class	Class I
Operating temperature	-20°C to +50°C
Connection	Disconnectable plug for Ø 8 to 10 mm cable (3 × 1.5 mm ²)
Fixing	2 reinforced stainless steel fixing straps with spring clip
Method of construction	One-piece housing with high mechanical and chemical resistance Long-lasting ingress protection thanks to axial screw fitting

Materials

Housing	Polycarbonate housing protected by a coextruded PMMA layer
End caps, fixing straps	Stainless steel 304 L
Gaskets	Peroxide-cured EPDM
Standards	
Ingress protection	IP66, IP68 and IP69K
Shock resistance	IK10
Fire resistance	650°C
Vibration resistance	Meets the severe application requirements of standard EN 60598-1 (tested according to IEC 60068-2-6)